

Transportation

Background:

Harry developed a life-long love of cars. Today the Harry S. Truman Library and Museum has on exhibit 3 of Harry's cars and a farm buggy his father had purchased for \$6.00 in 1914.

Harry didn't start out with cars though because he was born on a farm in Grandview, Missouri, in 1884. When Harry's mother saw 5 year old Harry jump at the exploding sounds during a Fourth of July celebration she discovered he couldn't see the shiny showers of fireworks. She hitched up horses to the wagon and drove him 15 miles to an eye doctor in Kansas City where he got his first set of eyeglasses.

Harry's cousins helped him reunite with his childhood love, Bess Wallace in 1910, For years he would take a 20 mile journey to Independence either by train or streetcar to see her. It was a difficult journey and took hours to make the trip. But on Saturday mornings you would see him stop by his cousin's house to freshen up, then trot across the street to see Bess. His friendship blossomed with Bess but it all changed in 1914. Harry's mother gave him \$650 and he bought his first car! It was a black, five-passenger, 1911 model Stafford. Then he would take Bess and friends for outings and the family for joyrides.

In 1940, Senator Harry Truman bought two Chryslers for himself and Bess. He had extras added to the car, a radio and a heater. His was a 1941 Royal Club coupe with 2 doors and hers was a 1941 Windsor sedan with four doors. When he became the 33rd president of the United States he gave his car to his sister, Mary Jane.

While Harry was president you could spot him in a 1950 Cosmopolitan Limousine and one time with Princess Elizabeth of England! It was designed by Ford at 20 ft long and would hold 7 passengers .

He took great pride in driving and maintaining his vehicles. He had his cars washed every few days, the upholstery vacuumed, and he never allowed smoking in his cars. The last car he bought was a 1972 Chrysler Newport and can still be seen parked in the garage at his home on 219 N. Delaware in Independence, MO.

Standard:

4.EG.5.E.a Analyze how changes in communication and transportation technologies affect people's lives.

3.TS.7.B.a With guidance and support, use visual tools and informational texts to interpret, draw conclusions, make predictions, and communicate information and ideas

4.EG.5.A.a Construct and interpret historical and current maps.

Materials Needed:

- 7 Photos
- Copy of background
- Copy of map

Vocabulary

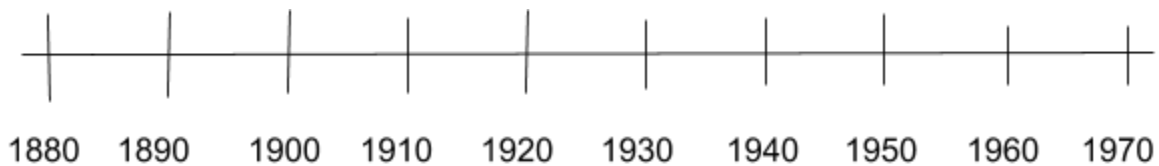
Procedure:

1. Activity 1: Predict and place photos in order from earliest to latest
2. Read and discuss background
3. Use dates and images to construct and label the timeline.
4. Activity 2: Discuss and label map with a title, compass, scale, and legend.
5. Extended Activity: Use receipts and background to determine differences in cost of cars

Assessment: Write a paragraph using background information, photos and map to tell about Harry's trip to see Bess. Be sure to include who, what, when, where and why.

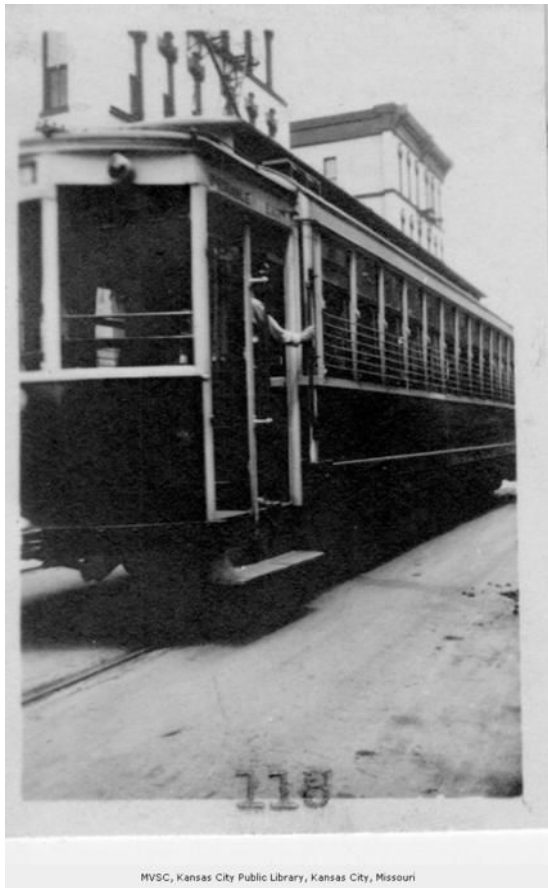
Activity 1:

Pass out photos of different modes of transportation Harry Turman used throughout his life. Ask students to put them in order from earliest to latest. Read aloud or independently background information so students can write down dates on their photos. Discuss how transportation changed, pros and cons and what time period was the biggest change. Use the timeline below or create their own to label.





Year _____



MVSC, Kansas City Public Library, Kansas City, Missouri

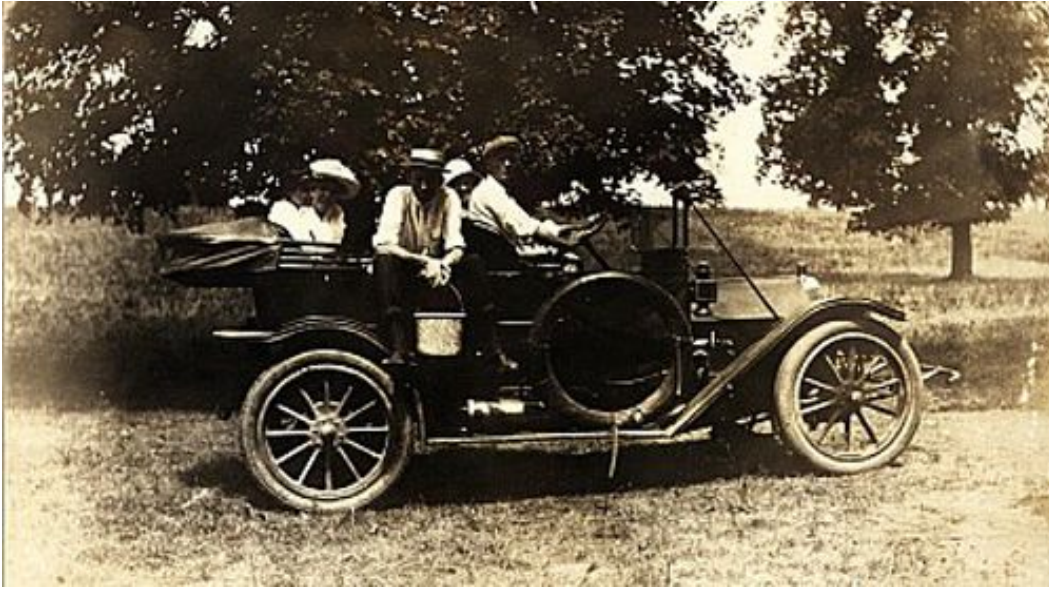
Year _____

Year



MHC, Kansas City Public Library, Kansas City, Missouri

Year _____



Year _____



Year _____



Year _____

Activity 2: Using the 1910 map of train routes below ask students the following questions.

- What does this map show?
- Which direction did Harry travel from the Grandview farm to see Bess in Independence, Missouri?

- How far did he travel?

Explain that we really don't know because this map is not complete. In order for it to tell us this information it needs to have a *title*, *legend*, *compass* and *scale*. Label this map as follows:

- What should the title be?
- Add a compass rose showing the top of the map as north
- Create a legend to name and identify the route Harry took
- Add a scale using background information (15 miles to KC, 20 miles to Independence)



Extended Activity: Compare and discuss the difference prices of modes of transportation in the background information and invoice below. Subtract the difference in cost for buggy (\$6.00), Stafford car (\$650.00) and new Chryslers. Which car cost more? (4 door) Why do you think it costs more? What was added to the cost of the car? How much was added?



LON'S CAR EXCHANGE
2423 E. 15th St.
Tel. CHestnut 4178 Kansas City, Missouri

We Trade

Soldman Turgood Date Nov. 9 19 40

SOLD TO Senator Harry S Truman

ADDRESS 210 N Delaware Indep Invoice No. 4662

NEW OR USED	SERIAL NO.	MOTOR NO.	KEY NO.	DESCRIPTION	AMOUNT
New	7065806	628-11505		Chrysler Royal Club Coupe	1186 00
				Radio and Heater	92 00
New	7908548	628-10884		Chrysler Windsor 4d Sedan	1280 00
				Radio and Heater	92 00
					2680 00
				Sales tax	53 00
				LON'S CAR EXCHANGE	
				PAID 1940 TOTAL	2703 00
				SETTLEMENT:	
				Cash on Delivery KANSAS CITY, MO.	1200 00
				Previous Deposit	
	1940 Chrysler	Used Car	Type Sedan	Serial No. Motor No.	1800 00
	1930 Dodge	Note	Sedan		
				TOTAL	2703 00