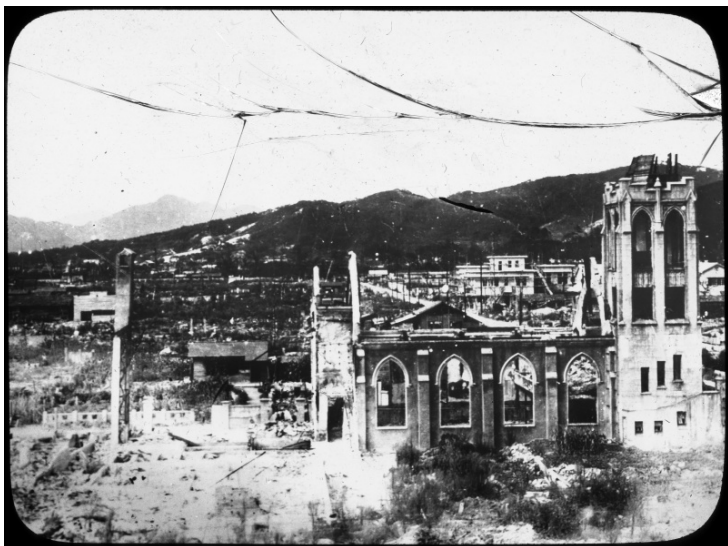


Destroyed Nagarekawa Methodist Church of Christ in Hiroshima



Accession Number
2023-510

Description

Side view of the destroyed Nagarekawa Methodist Church of Christ in Hiroshima, Japan, after the atomic bomb destroyed the city. Behind the church is the Hiroshima Central Broadcasting Office and Shukkeien Park. Cracks in the lantern slide are visible across the top of the image.

Date(s)
1945

Rights Public Domain - This item is in the public domain and can be used freely without further permission.

Note: If you use this image, rights assessment and attribution are your responsibility.

Harry S. Truman Library & Museum.

Attention media: Please make note of this item's accession number. Print out this page and retain it for your permissions records before downloading this image file for possible publication. Library staff cannot sign permissions forms or provide additional paperwork. The Library charges no usage fees for downloaded images.