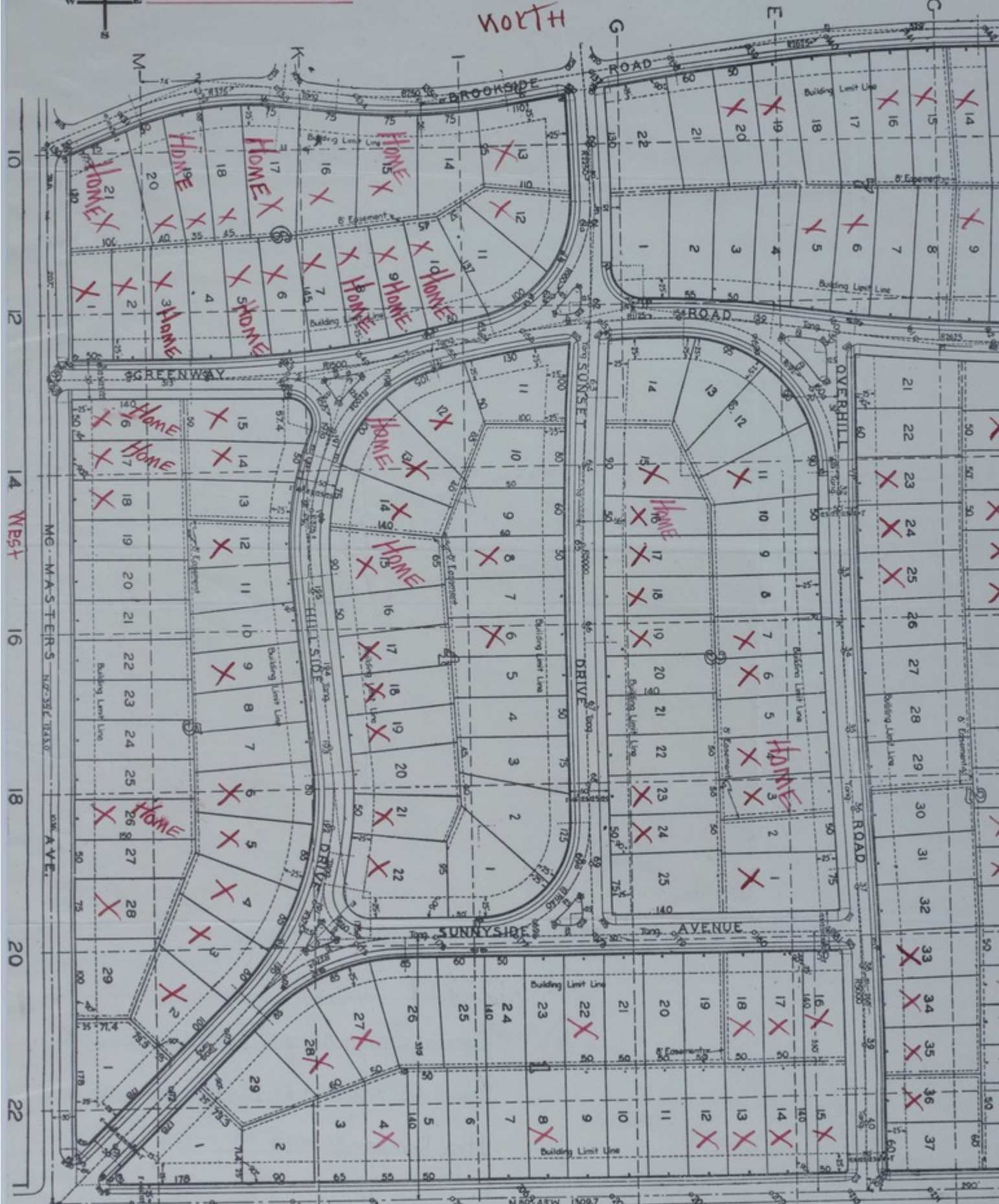


NEW High School
23 ACRES

NORTH of High School is STATE Highway 13

PLAT OF HILL HAVEN

NORTH



Accession Number

M182

Description

A map, titled "Plat of Hill Haven," that highlights the proposed location of a new high school in Moberly, Missouri. The map is divided into sections and shows plots, building limit lines, easements, and roads. Plots containing homes have been marked, while others have been checked in red ink. Other handwriting on the front reads: "New high school, 23 acres" and "North of high school is State Highway Building." Handwriting on the back reads: "Papers of Senator Harry S. Truman. Folder: W.P.A.-District No. 1-Moberly. Ltr.: December 4, 1940."

Date(s)

Keywords

[Schools](#)

[Cities and towns](#)

Photo Color

Color

Physical Size

13 X 11 inches

Related Collection (Plain)

Harry S. Truman Papers as U.S. Senator and Vice President

Restrictions

Undetermined

TIF Identifier

M182.tif

Rights

The Library is unaware of any copyright claims to this item; use at your own risk.

Note: If you use this image, rights assessment and attribution are your responsibility.

Credit:

Courtesy Harry S. Truman Library & Museum, Independence, Missouri.

Attention media: Please make note of this item's map number. Print out this page and retain it for your permissions records before downloading this image file for possible publication. Library staff cannot sign permissions forms or provide additional paperwork. The Library charges no usage fees for downloaded images. Fees are charged for higher resolution scans.