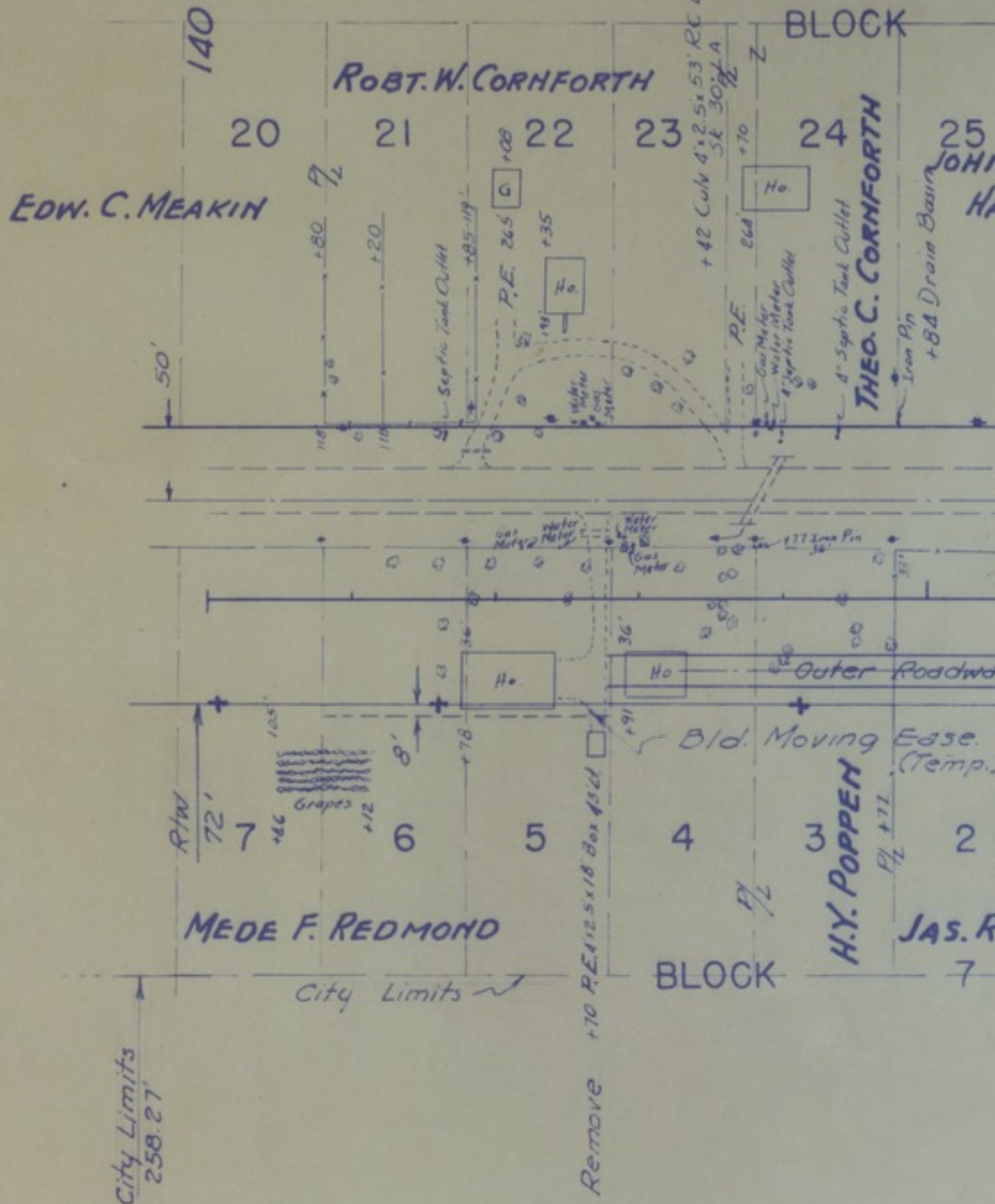


NOTE:

Use all P.E., F.E. & SR
in Place on W. Side of
Pres. Pavt. on this sheet

S.E. 1/4 N.E. 1/4

PLAN	SURVEYED	BY	DATE
NOTE BOOK NO.	PLOTTED	Maeller	
	ALIGNMENT CHECKED	11-27-1918	
	RT. OF WAY CHECKED		



S.W. 1/4 N.W. 1/4

Accession Number

M136

Description

A State Highway Commission of Missouri plan of changes to U.S. Route 71 near the Harry S. Truman Farm plot in Grandview, Missouri. This plan includes the names of property owners and the details for easement on these properties.

Date(s)

Cartographer

State Highway Commission of Missouri.

Keywords

[Roads](#)

[Presidential residences](#)

Photo Color

Color

Physical Size

22 X 36 1/2 inches

Related Collection (Plain)

Harry S. Truman Post-Presidential Papers

Restrictions

Unrestricted

TIF Identifier

M136.tif

Rights

This item is in the public domain and can be used freely without further permission.

Note: If you use this image, rights assessment and attribution are your responsibility.

Credit: State Highway Commission of Missouri.

Courtesy Harry S. Truman Library & Museum, Independence, Missouri.

Attention media: Please make note of this item's map number. Print out this page and retain it for your permissions records before downloading this image file for possible publication. Library staff cannot sign permissions forms or provide additional paperwork. The Library charges no usage fees for downloaded images. Fees are charged for higher resolution scans.