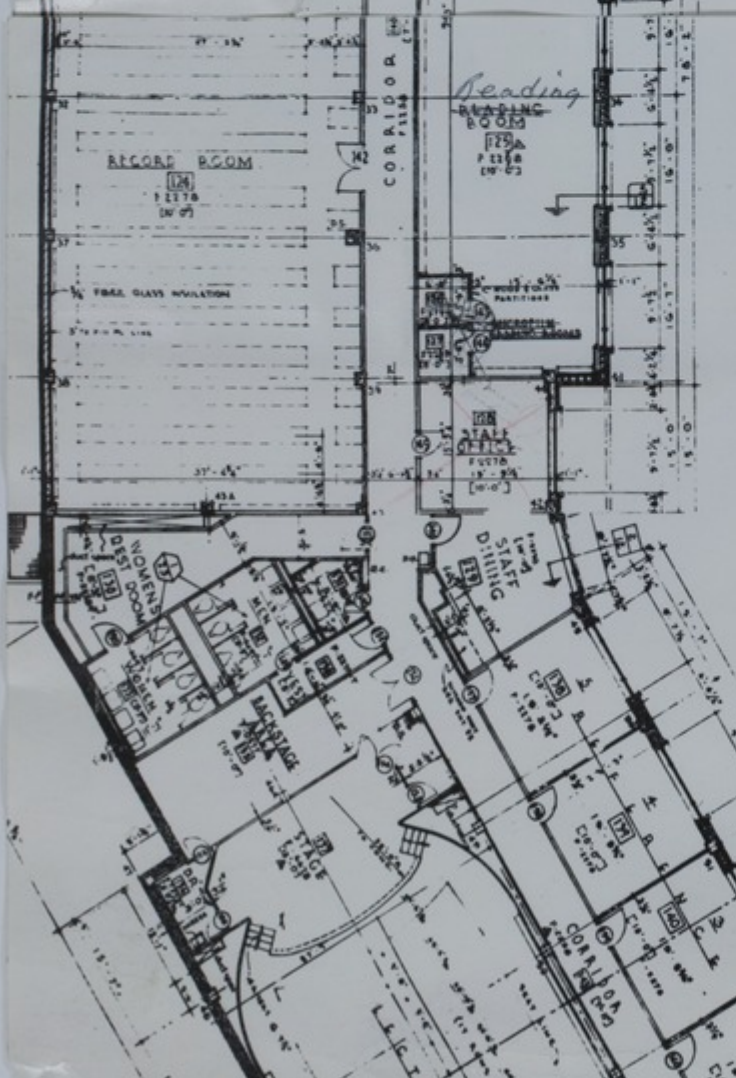


FIRST FLOOR PLAN
(NORTH PORTION)
SCALE: 1/8" = 1'-0"

DOOR NO.	OPENING NO.	DOOR W.	DOOR H.	DOOR TYPE	DOOR MATERIAL	DOOR FRAME	DOOR HEAD	DOOR SILL	DETAILS	REMARKS
100	6-0	7-0	1 1/2"	F	WD	AL	1/2"	1/2"	1/2"	WIDE GLASS
101	5-0	7-0	1 1/2"	DOOR	C	FRAME	BY	SLV.	1/2"	CONTR.
102	3-0	7-0	1 1/2"	A	WD	MET	1/2"	1/2"	1/2"	
103	3-0	7-0	1 1/2"	A	WD	MET	1/2"	1/2"	1/2"	
104	3-0	7-0	1 1/2"	A	WD	MET	1/2"	1/2"	1/2"	
105	3-0	7-0	1 1/2"	A	WD	MET	1/2"	1/2"	1/2"	
106	3-0	7-0	1 1/2"	A	WD	MET	1/2"	1/2"	1/2"	
107	2-4	7-0	1 1/2"	B	WD	MET	1/2"	1/2"	1/2"	
108	2-4	7-0	1 1/2"	B	WD	MET	1/2"	1/2"	1/2"	
109	4-8	6-8	1 1/2"	A	WD	MET	1/2"	1/2"	1/2"	SLIDING
110	2-8	7-0	1 1/2"		WD	WD				
111	2-8	7-0	1 1/2"		WD	WD				
112	2-8	7-0	1 1/2"		WD	WD				
113	3-0	7-0	1 1/2"	B	WD	MET	1/2"	1/2"	1/2"	
114	3-0	7-0	1 1/2"	A	WD	MET	1/2"	1/2"	1/2"	OBSCURE GLASS
115	3-0	7-0	1 1/2"	D	WD	MET	1/2"	1/2"	1/2"	
116	3-0	7-0	2"		WD	MET				
117	2-8	7-0	1 1/2"		WD	WD				
118	6-0	6-1/2			G	AL	AL			SLIDING, DOUBLE GLAZED, TRANSOM
119	6-0	6-1/2			G	AL	AL			SLIDING, DOUBLE GLAZED, TRANSOM
120	3-0	7-0	1 1/2"	A	WD	MET	1/2"	1/2"	1/2"	
121	2-8	7-0	1 1/2"	A	WD	MET	1/2"	1/2"	1/2"	
122	2-8	7-0								BY WIRE PARTITION CONTR.
123	2-8	7-0	1 1/2"	A	WD	MET	1/2"	1/2"	1/2"	1" CRACK
124	2-8	7-0	1 1/2"	D	WD	MET	1/2"	1/2"	1/2"	TRANSOM, TEMPERED PLATE GLASS
125	4-7	7-0	1 1/2"	C	AL	AL				1/2" PLATE TRANSOM



Accession Number

M80

Description

Two prints, taped together, that show a portion of the proposed first floor of the Harry S. Truman Library. The plan, a smaller cropped version of M69, shows the dimensions of each room and includes a table regarding doors. Annotations on the front read: "Office," "Conference," "Museum Storage and Workroom," "Reading Room," and "Microfilm Reading Rm." A crease running through the top portion distorts the drawing.

Date(s)

Cartographer

Architects: Gentry and Voskamp, Kansas City, Missouri. Neild-Somdal Associates, Shreveport, Louisiana.

Keywords

[Presidential libraries](#)

Photo Color

Color

Physical Size

13 X 9 1/4 inches

Related Collection (Plain)

Harry S. Truman Library, Inc. Records

Restrictions

Unrestricted

Scale

1/8 inch = 1 foot

TIF Identifier

M80.tif

Rights

This item is in the public domain and can be used freely without further permission.

Note: If you use this image, rights assessment and attribution are your responsibility.

Credit: Architects: Gentry and Voskamp, Kansas City, Missouri. Neild-Somdal Associates, Shreveport, Louisiana.

Courtesy Harry S. Truman Library & Museum, Independence, Missouri.

Attention media: Please make note of this item's map number. Print out this page and retain it for your permissions records before downloading this image file for possible publication. Library staff cannot sign permissions forms or provide additional paperwork. The Library charges no usage fees for downloaded images. Fees are charged for higher resolution scans.