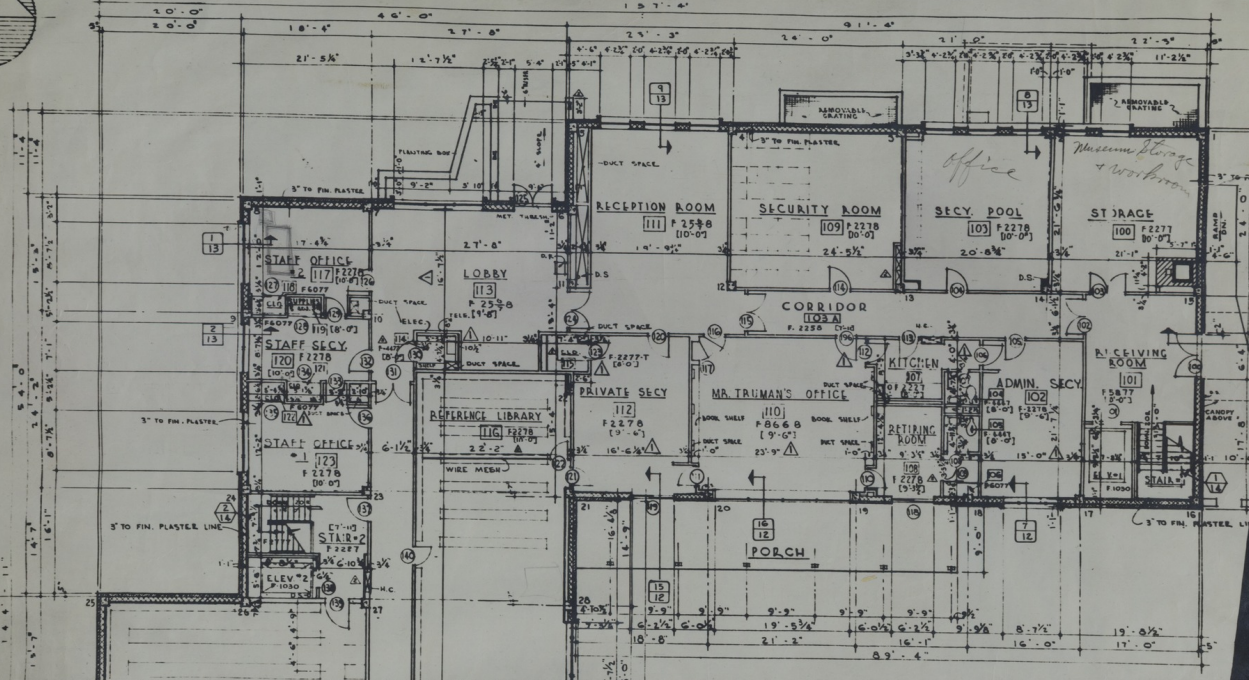
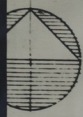


NORTH



FIRST FLOOR PLAN  
(NORTH PORTION)  
SCALE: 1/8" = 1'-0"

D O O R S

DOOR NO.	OPENING	DOOR	DOOR MATERIAL	DETAILS	REMARKS	DOOR NO.
100	3'-0" x 7'-0"	1 1/2"	F WD	6 C 1/2 1/2 3/8	WIRE GLASS	51
101	5'-0" x 7'-0"	1 1/2"	F WD	6 C 1/2 1/2 3/8	CONTR.	52
102	3'-0" x 7'-0"	1 1/2"	A WD	MET 1/2 1/2 1/2		53
103	5'-0" x 7'-0"	1 1/2"	A WD	MET 1/2 1/2 1/2		54
104	3'-0" x 7'-0"	1 1/2"	A WD	MET 1/2 1/2 1/2		55
105	3'-0" x 7'-0"	1 1/2"	A WD	MET 1/2 1/2 1/2		56
106	3'-0" x 7'-0"	1 1/2"	A WD	MET 1/2 1/2 1/2		57
107	2'-4" x 7'-0"	1 1/2"	B WD	MET 1/2 1/2 1/2		58
108	2'-4" x 7'-0"	1 1/2"	B WD	MET 1/2 1/2 1/2		59
109	4'-8" x 6'-8" 1/2"	1 1/2"	A WD	MET 1/2 1/2 1/2	SLIDING	16
110	2'-8" x 7'-0"	1 1/2"	WD	WD		16
111	2'-8" x 7'-0"	1 1/2"	WD	WD		16
112	2'-8" x 7'-0"	1 1/2"	WD	WD		16
113	3'-0" x 7'-0"	1 1/2"	B WD	MET 1/2 1/2 1/2		16
114	3'-0" x 7'-0"	1 1/2"	A WD	MET 1/2 1/2 1/2		16
115	3'-0" x 7'-0"	1 1/2"	D WD	MET 1/2 1/2 1/2	OBSCURE GLASS	16
116	3'-0" x 7'-0"	2"	WD	MET		16
117	2'-8" x 7'-0"	1 1/2"	WD	WD		16
118	6'-0" x 6'-11 1/2"		G AL	AL	SLIDING, DOUBLE GLAZED, TRANSP	
119	6'-0" x 6'-11 1/2"		G AL	AL	SLIDING, DOUBLE GLAZED, TRANSP	
120	3'-0" x 7'-0"	1 1/2"	A WD	MET		
121	2'-8" x 7'-0"	1 1/2"	A WD	MET		
122	2'-8" x 7'-0"	1 1/2"	D WD	MET		
123	2'-8" x 7'-0"	1 1/2"	A WD	MET	BY WIRE PARTITION CONTR	
124	3'-0" x 7'-0"	1 1/2"	D WD	MET	1" CRACK	
124	3'-0" x 7'-0"	1 1/2"	C AL	AL	TRANSP, TEMPERED PLATE GLASS	
124	3'-0" x 7'-0"	1 1/2"	C AL	AL	TEMPERED PLATE TRANSP	

**Accession Number** M69

**Description**

Two prints, taped together, that show a portion of the proposed first floor of the Harry S. Truman Library. The plan shows the dimensions of each room and includes a table regarding doors. Handwriting on the front reads: "Office," "Museum Storage and Workroom," and "Microfilm Reading Rm." Handwriting on the back reads: "HST wing, Dir's offices," "First Floor," and "Main Floor."

**Date(s)**

**Cartographer** Architects: Gentry and Voskamp, Kansas City, Missouri. Neild-Somdal Associates, Shreveport, Louisiana.

**Keywords** [Presidential libraries](#)

**Photo Color** Color

**Physical Size** 33 X 25 1/2 inches

**Related Collection (Plain)**

Harry S. Truman Library, Inc. Records

**Restrictions** Unrestricted

**Scale** 1/8 inch = 1 foot

**TIF Identifier** M69.tif

**Rights**

This item is in the public domain and can be used freely without further permission.

**Note: If you use this image, rights assessment and attribution are your responsibility.**

Credit: Architects: Gentry and Voskamp, Kansas City, Missouri. Neild-Somdal Associates, Shreveport, Louisiana.

Courtesy Harry S. Truman Library & Museum, Independence, Missouri.

Attention media: Please make note of this item's map number. Print out this page and retain it for your permissions records before downloading this image file for possible publication. Library staff cannot sign permissions forms or provide additional paperwork. The Library charges no usage fees for downloaded images. Fees are charged for higher resolution scans.