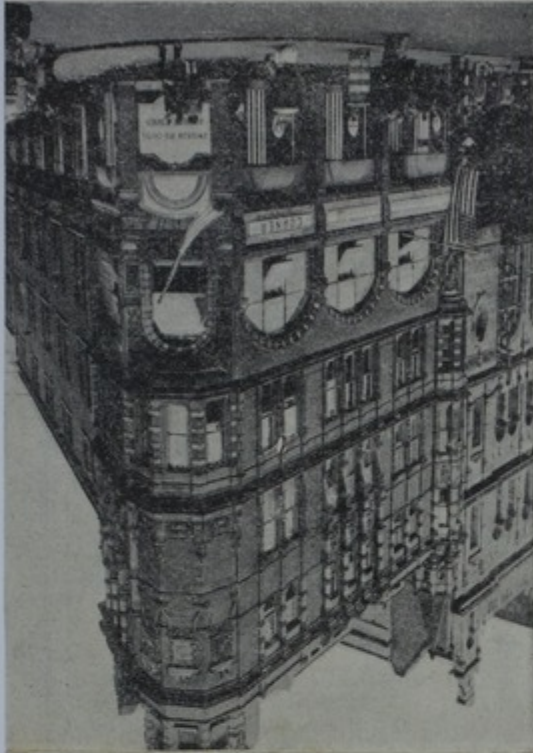


If you get lost in London
come here.

BAINBOW CORNER
Shaftesbury Avenue, W.1. (off Piccadilly Circus).
'phone Gerrard 5616
Bus Service Nos: 14, 19, 22, 25c, 38, 38a, pass the door.
Bus Service Nos: 3, 6, 9, 12, 13, 15, 23, 33a, 39, 39a, 60,
88, 96, 139. Alight at Piccadilly Circus.



Right:
WASHINGTON CLUB
'phone Cranmer 4901
'phone Curzon Street, W.1.
Bus Service Nos: 9, 14,
19, 22, 25c, 25c, 38, 38a,
96.
Alight at Berkeley Street,
Piccadilly.



Below:
PRINCES GARDENS CLUB FOR OFFICERS
16, Princes Gardens, S.W.7.
'phone Kensington 7212
Bus Service Nos: 9, 49, 52, 73. Alight at Exhibition Road.



Left:
VICTORY CLUB
18, Seymour Street, W.1.
'phone Welbeck 5491
Bus Service Nos: 2, 6, 7,
8, 12, 13, 16, 17, 30, 36,
66, 73, 74, 88, 137.
Alight at Marble Arch.



Below:
AMERICAN RED CROSS CLUB
10, Charles Street, W.1.
'phone Grosvenor 2261
Bus Service Nos: 2, 13,
14, 113,
1 Fortman Street
South Kensington
Bus Service Nos: 6, 7, 8,
17, 60, 73, 88, 137
Alight at Selfridges,
Street.

**NEW
AMERICAN RED CROSS CLUBS.**

INTERSTATE CLUB

37, Dover Street, Piccadilly, W.1.
'phone Regent 6543.

Nearest Tube Station: Green Park.

Bus Service Nos: 9, 14, 19, 22, 25c, 25c, 38, 38a, 96.
Alight at Green Park Station (Ritz Hotel).

VANDYKE CLUB

120, Cromwell Road, South Kensington,
S.W.7.

'phone Western 0871.

Nearest Tube Station: Gloucester Road.

Bus Service No. 74 passes the door.

Bus Service No. 49
Alight at Gloucester Road Station.



WOMENS CLUB

Left:
**AMERICAN RED CROSS CLUB
SERVICES FOR
WOMEN**
47/48, Charles Street,
'phone Grosvenor

Bus Service Nos:
22, 25c, 25c, 38,
Alight at Berkeley
Piccadilly.

Below:
**AMERICAN RED CROSS CLUB
OFFICERS' CLUB
WOMEN**
10, Charles Street,
'phone Grosvenor

Bus Service Nos:
22, 25c, 25c, 38,
Alight at Berkeley
Piccadilly.



OFFICERS CLUBS

Above:
JULES CLUB
Jermyn Street, S.W.1.
'phone Abbey 5636

Bus Service Nos: 9, 14,
19, 22, 38, 38a, 96.
Alight near Duke Street,
Piccadilly.

Bus Service Nos: 25c,
25c,
Alight at Bond Street,
Piccadilly End.

Left:
REINDEER CLUB
6/7, Clifford Street, W.1
'phone Regent 6593

Bus Service Nos: 25c,
25c,
Alight at Bond Street.



M1448

Accession Number

M1448-01

Description

The map of the London Underground shows various lines, stations, escalator connections, and interchange stations. The tinted area highlights the stations near American Red Cross clubs. Printed text, accompanied by photographs, gives details on some of these clubs. This map is located on the back of M1448.

Date(s)

Cartographer

American Red Cross. Map: H.C. Beck.

Keywords

[World War, 1939-1945](#)

Photo Color

Color

Physical Size

11 3/4 X 19 3/4 inches

Related Collection (Plain)

William F. Finan Papers

Restrictions

Undetermined

TIF Identifier

M1448-01.tif

Rights

The Library is unaware of any copyright claims to this item; use at your own risk.

Note: If you use this image, rights assessment and attribution are your responsibility.

Credit: American Red Cross. Map: H.C. Beck.

Courtesy Harry S. Truman Library & Museum, Independence, Missouri.

Attention media: Please make note of this item's map number. Print out this page and retain it for your permissions records before downloading this image file for possible publication. Library staff cannot sign permissions forms or provide additional paperwork. The Library charges no usage fees for downloaded images. Fees are charged for higher

resolution scans.