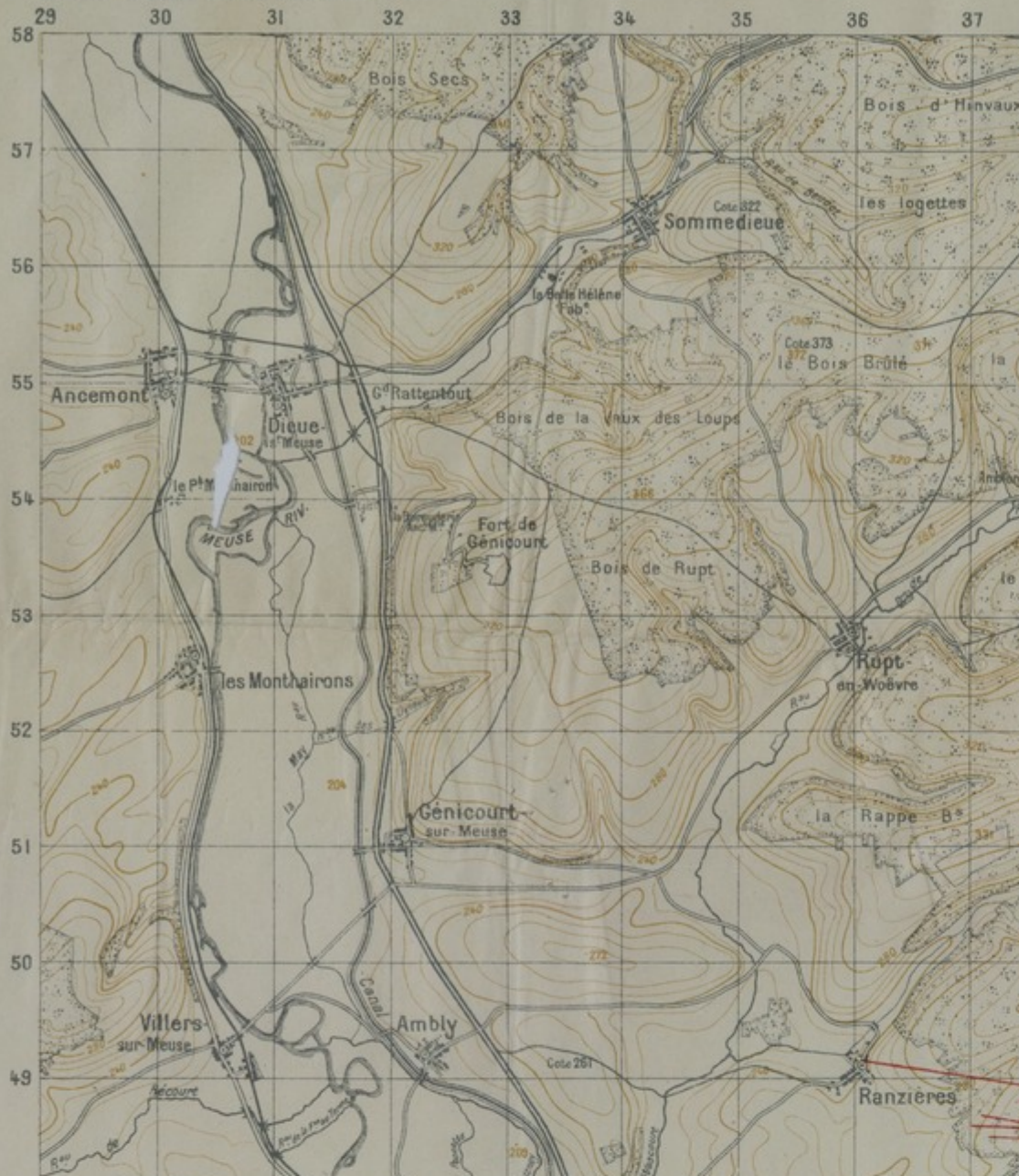


GROUPE DES CANEVAS DE TIR .



Accession Number

M1031

Description

A French map titled "St. Mihiel." The map is overprinted to show the positions and movement of German batteries, the location of battle lines, length of the line, unit designation, type of artillery caliber being used, the length of firing activity for each battery, and the condition of the battery (rested, tired, refitting).

Date(s)

Cartographer

Groupe des Canevas de Tir. Annotated by S.T.C.A.

Keywords

[World War, 1914-1918](#)

Photo Color

Color

Physical Size

35 1/2 X 24 3/4 inches

Related Collection (Plain)

Thirty-Fifth Division Association Records

Restrictions

Unrestricted

Scale

1:50,000

TIF Identifier

M1031.tif

Rights

This item is in the public domain and can be used freely without further permission.

Note: If you use this image, rights assessment and attribution are your responsibility.

Credit: Groupe des Canevas de Tir. Annotated by S.T.C.A.

Courtesy Harry S. Truman Library & Museum, Independence, Missouri.

Attention media: Please make note of this item's map number. Print out this page and retain it for your permissions records before downloading this image file for possible

publication. Library staff cannot sign permissions forms or provide additional paperwork. The Library charges no usage fees for downloaded images. Fees are charged for higher resolution scans.