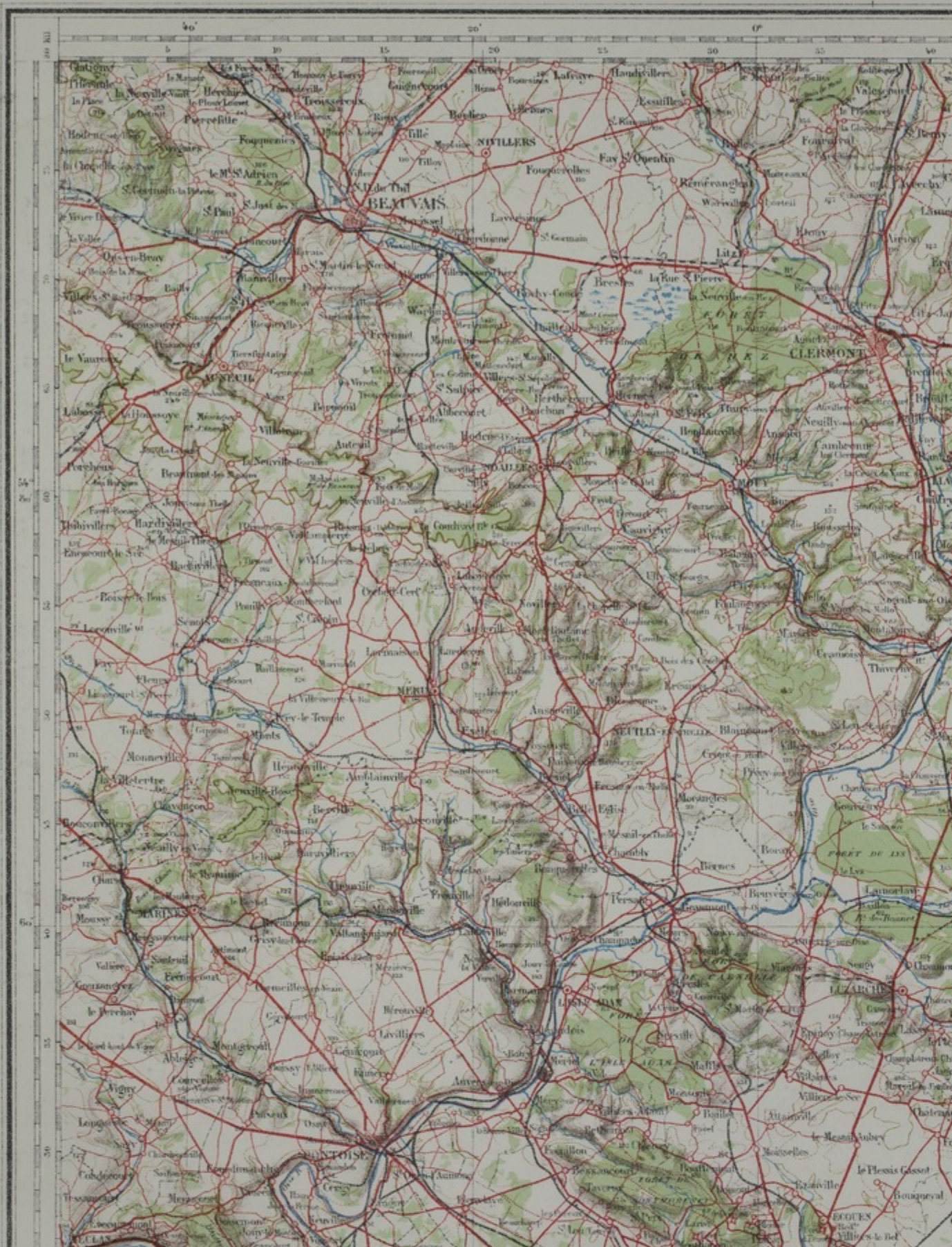






32 Beauvais Rev. de 1902	33 Soissons Rev. de 1903
42 Paris Rev. de 1901	43 Meaux Rev. de 1902

Disposition des feuilles correspondantes  
de la Carte de France à 60,000





Accession Number

M603

**Description**

A French map, numbered 16 in a series, of cities, towns, transportation routes, forests, rivers, and lakes surrounding Paris.

**Date(s)**

Cartographer

Service Geographique de l'Armee. Printed at Base Printing Plant, 29th Engineers, U.S. Army, 1918.

Keywords

[World War, 1914-1918](#)

Photo Color

Color

Physical Size

21 X 28 inches

Related Collection (Plain)

Record Group 120, Records of the American Expeditionary Forces (World War I): Records of the American Expeditionary Forces General Headquarters

Restrictions

Unrestricted

Scale

1:200,000

TIF Identifier

M603.tif

Rights

This item is in the public domain and can be used freely without further permission.

**Note: If you use this image, rights assessment and attribution are your responsibility.**

Credit: Service Geographique de l'Armee. Printed at Base Printing Plant, 29th Engineers, U.S. Army, 1918.

Courtesy Harry S. Truman Library & Museum, Independence, Missouri.

Attention media: Please make note of this item's map number. Print out this page and retain it for your permissions records before downloading this image file for possible publication. Library staff cannot sign permissions forms or provide additional paperwork. The Library charges no usage fees for downloaded images. Fees are charged for higher resolution scans.