

NORTH SEA

GENERAL MAP

Showing Geographic Relations of Warring and Neutral Nations, Distances in Nautical Miles, Boundaries, Cities and Towns, and All Geographical Features of Importance
Scale: 1 Inch = 60 Miles
The Northern Battle Front, here outlined in color, is represented in large scale in accompanying map

RAND McNALLY WAR MAP OF THE BRITISH FRONT

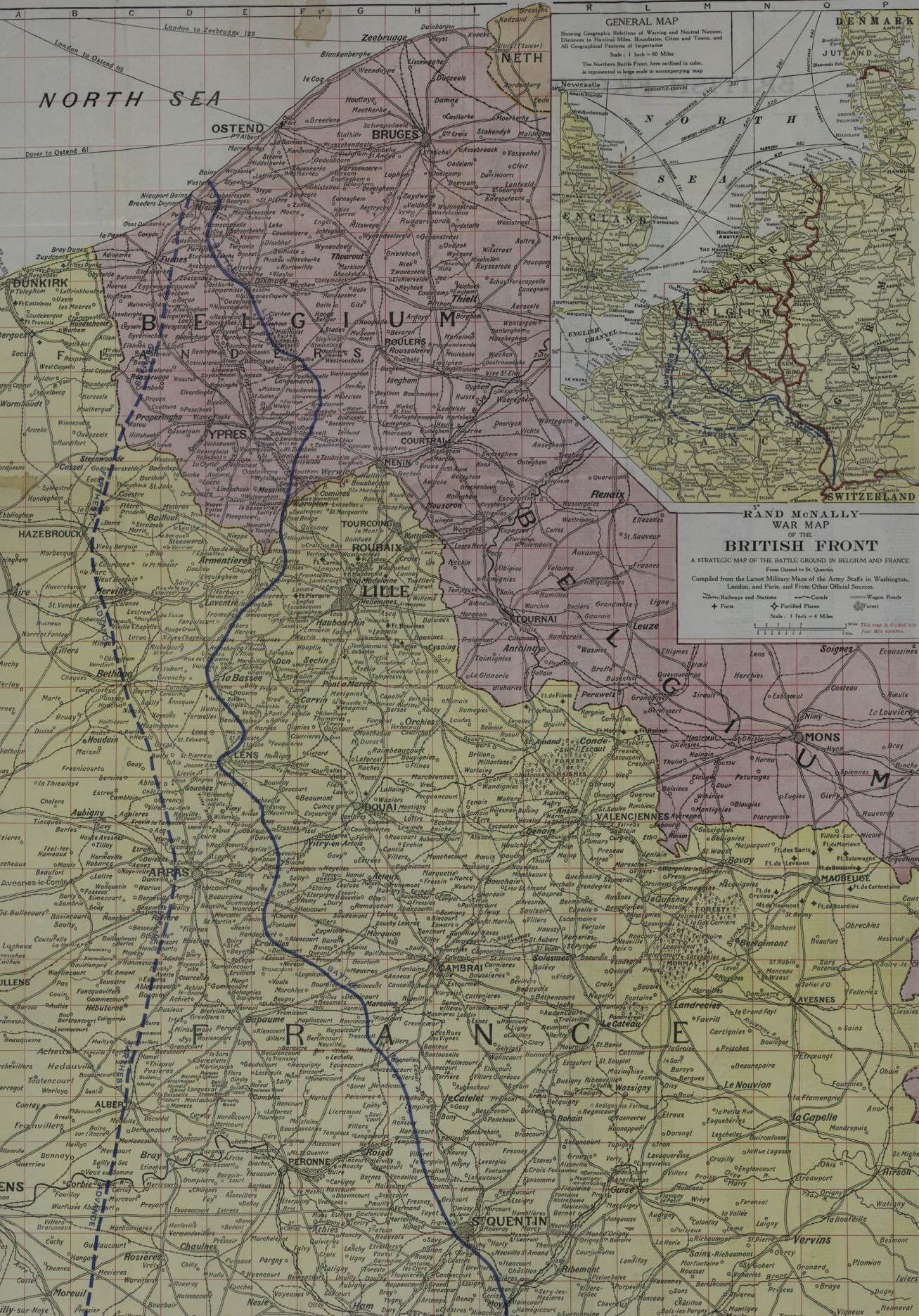
A STRATEGIC MAP OF THE BATTLE GROUND IN BELGIUM AND FRANCE

From General to St. Quentin
Compiled from the Latest Military Maps of the Army Staffs in Washington, London, and Paris, and From Other Official Sources.

Scale: 1 Inch = 4 Miles

From this map a divided into four Mile squares.

Legend:
+ Forts
◆ Fortified Places
— Canals
— Wagon Roads
— Forest



DENMARK
JUTLAND
SWITZERLAND

Grid letters: A, B, C, D, E, F, G, H, I, J, K, L, M, N, O, P
Grid numbers: 1, 2, 3, 4, 5, 6, 7, 8, 9, 10, 11, 12, 13, 14, 15, 16, 17, 18, 19, 20, 21, 22, 23, 24

Accession Number M972

Description

Rand McNally World War map of the British front. A strategic map of the battleground in Belgium and France from Ostend to St. Quentin. The back side has an index of canals, forests, forts, mountains, rivers, and towns in Belgium and France. Donated by F.B. Avery.

Date(s)

Cartographer Rand McNally and Company.

Keywords [World War, 1914-1918](#)

Photo Color Color

Physical Size 32 X 22 inches

Related Collection (Plain)

Thirty-Fifth Division Association Records

Restrictions Unrestricted

Scale 1 inch = 4 miles and 1 inch = 60 miles

TIF Identifier M972.tif

Rights

This item is in the public domain and can be used freely without further permission.

Note: If you use this image, rights assessment and attribution are your responsibility.

Credit: Rand McNally and Company.

Courtesy Harry S. Truman Library & Museum, Independence, Missouri.

Attention media: Please make note of this item's map number. Print out this page and retain it for your permissions records before downloading this image file for possible publication. Library staff cannot sign permissions forms or provide additional paperwork. The Library charges no usage fees for downloaded images. Fees are charged for higher resolution scans.