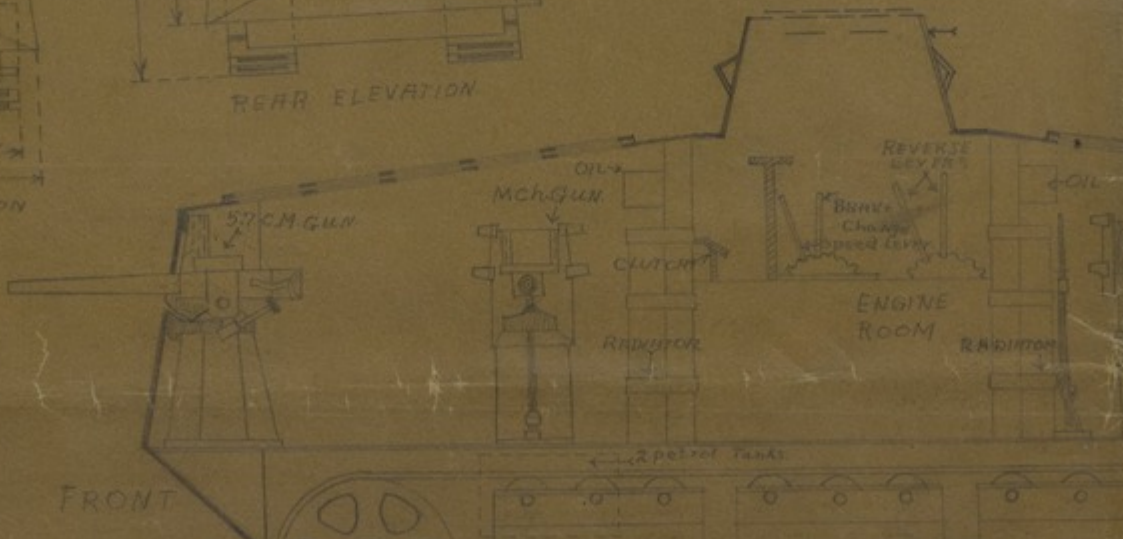
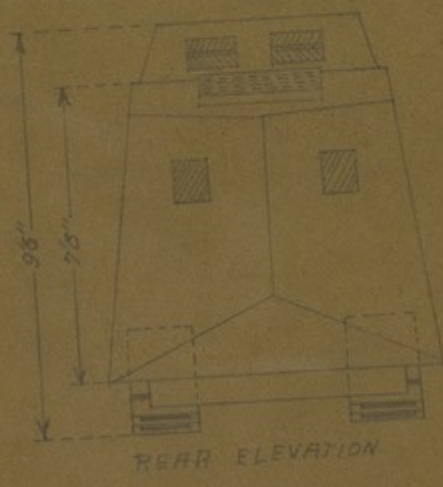
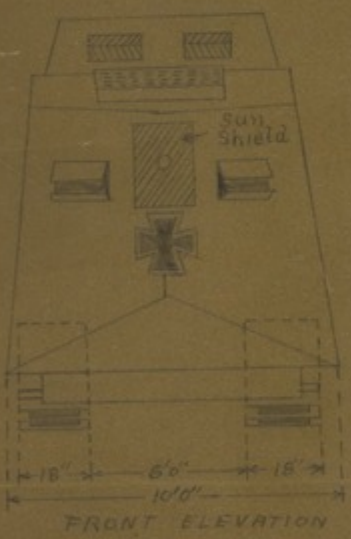
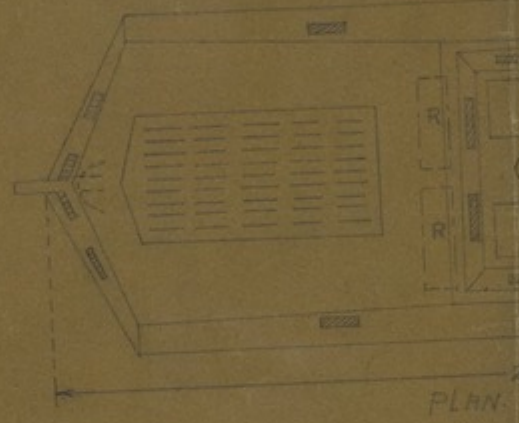
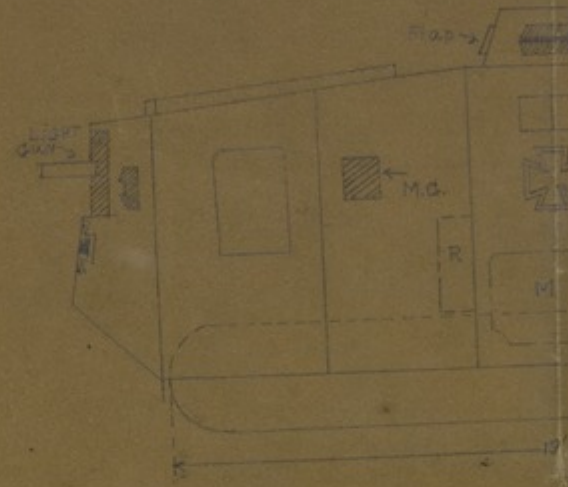
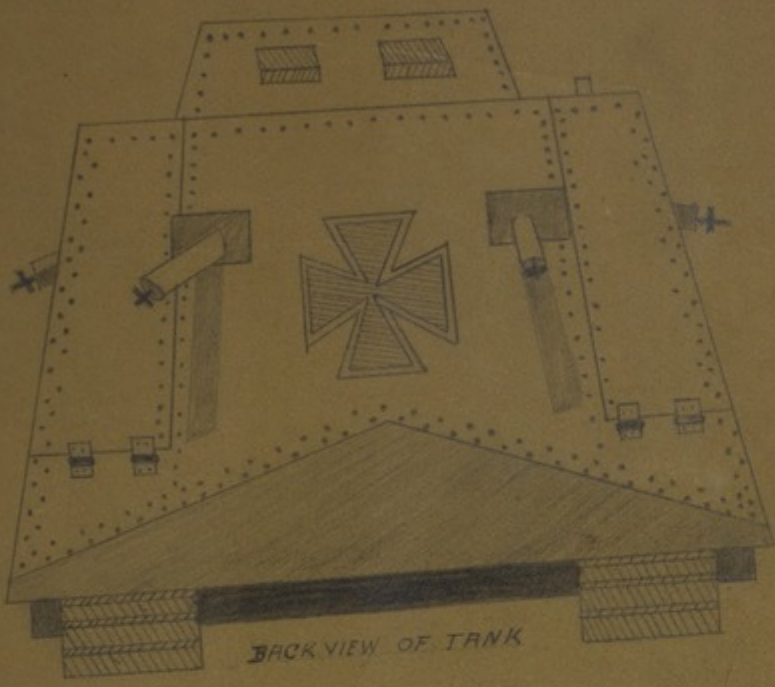


GERMAN TANK CAPTURED

DRAWN BY C.E. TENNEY BY
CAPT. RE. TRUMAN P.I.O. 140th INF. 5155 ELVA



Accession Number

M1012

Description

A pencil drawing of a German tank captured 04/24/1918. Drawings include back view of tank; front, rear, and side elevations; plan of tank and view of the interior. Donated by Ralph E. Truman.

Date(s)

Cartographer

Hand-drawn by C.E. Tenney by authority of Capt. R.E. Truman, R.I.O. 140th Infantry.

Keywords

[World War, 1914-1918](#)

Photo Color

Color

Physical Size

13.5 X 12.5 inches

Related Collection (Plain)

Thirty-Fifth Division Association Records

Restrictions

Unrestricted

Scale

1 inch = 3 feet

TIF Identifier

M1012.tif

Rights

This item is in the public domain and can be used freely without further permission.

Note: If you use this image, rights assessment and attribution are your responsibility.

Credit: Hand-drawn by C.E. Tenney by authority of Capt. R.E. Truman, R.I.O. 140th Infantry.

Courtesy Harry S. Truman Library & Museum, Independence, Missouri.

Attention media: Please make note of this item's map number. Print out this page and retain it for your permissions records before downloading this image file for possible

publication. Library staff cannot sign permissions forms or provide additional paperwork. The Library charges no usage fees for downloaded images. Fees are charged for higher resolution scans.