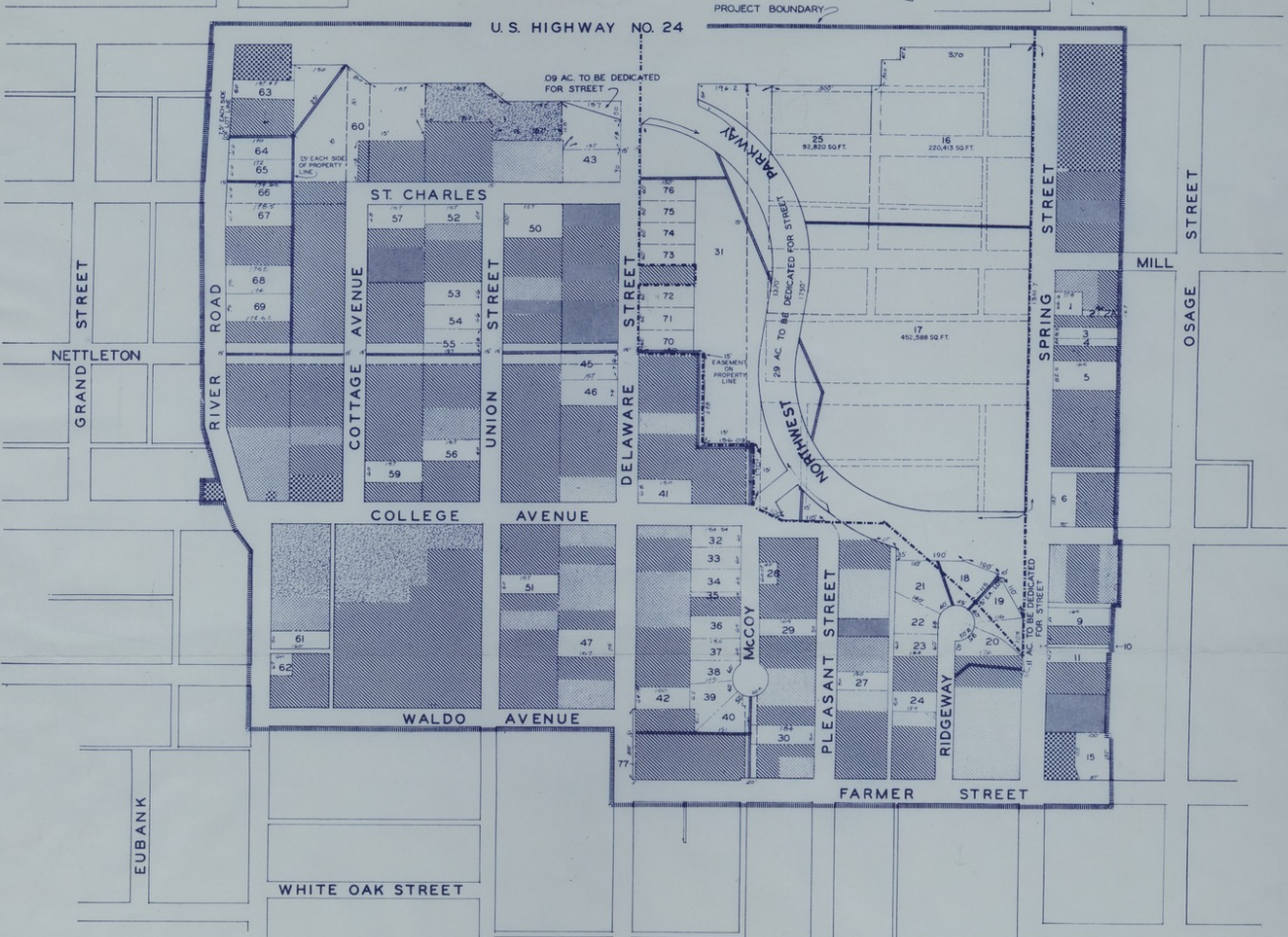


175-200
7 Acres
300 ft
510 ft



LEGEND

- DISPOSITION PARCEL
- PARCEL NUMBER
- LOT DIMENSION
- CLEARANCE AREA BOUNDARY
- EASEMENT**
ALL EASEMENTS ARE SHOWN SCHEMATICALLY
EXACT LOCATION SUBJECT TO PRECISE LOCATION
OF UTILITIES
- PUBLIC - SEMI PUBLIC
- SINGLE FAMILY RESIDENTIAL
- MULTI-FAMILY
- VACANT LAND
- COMMERCIAL

PARCEL NO.	AREA	PROPOSED LAND USE	BLDG. LINE
1	.885	GARDEN APT.	30
2	.251	DO	30
3	.883	ONE OR TWO FAMILY	30
4	.0757	DO	30
5	.325	DO	30
6	.2459	DO	30
7	.484	DELETED	30
8	.563	DELETED	30
9	.883	ONE OR TWO FAMILY	25
10	.0385	DO	25
11	.553	DO	25
12	.886	DELETED	25
13	.887	DELETED	25
14	.887	DELETED	25
15	.2757	ONE OR TWO FAMILY	25
16	15.0000	COMMERCIAL - SEE MAP	25
17	10.3900	GARDEN APT.	35
18	.2994	ONE OR TWO FAMILY	35
19	.2662	DO	35
20	.3060	DO	35
21	.3500	DO	35
22	.2881	DO	25
23	.0708	DO	25
24	.423	DO	25
25	14.3200	COMMERCIAL - SEE MAP	25
26	.178	DELETED	25
27	.022	ONE OR TWO FAMILY	25
28	.054	DO	25
29	.882	DO	25
30	.2341	DO	25
31	2.0800	PARK	25
32	.883	ONE OR TWO FAMILY	25
33	.885	DO	25
34	.884	DO	25
35	.0341	DO	25
36	.2014	DO	25
37	.2014	DO	25
38	.831	DO	30

PARCEL NO.	AREA	PROPOSED LAND USE	BLDG. LINE
39	.2458	ONE OR TWO FAMILY	35
40	.2477	DO	35
41	.2442	DO	35
42	.2440	DO	25
43	.483	DO	25
44	.263	DO	25
45	.2667	DO	25
46	.2667	DO	25
47	.2703	DO	25
48	.2257	DELETED	25
49	.2343	ONE OR TWO FAMILY	25
50	.3604	DO	25
51	.802	DO	25
52	.848	DO	25
53	.8379	DO	25
54	.2378	DO	25
55	.2379	DO	25
56	.263	DO	25
57	.2456	DO	25
58	.2664	DELETED	25
59	.2664	ONE FAMILY	25
60	2.0850	PARK	25
61	.837	ONE OR TWO FAMILY	25
62	.0514	DO	25
63	.861	DO	25
64	.2317	DO	25
65	.2317	DO	25
66	.2318	DO	25
67	.2456	ONE FAMILY	25
68	.2456	DO	25
69	.2456	DO	25
70	.2135	ONE OR TWO FAMILY	25
71	.2135	DO	25
72	.2135	DO	25
73	.2066	DO	25
74	.2066	DO	25
75	.2066	DO	25
76	.2066	DO	25

PARCEL NO.	AREA	PROPOSED LAND USE	BLDG. LINE
77	.0229	DEDICATED TO CITY	---

LAND DISPOSAL PLAN

NORTHWEST PARKWAY PROJECT MO R-31
LAND CLEARANCE FOR REDEVELOPMENT AUTHORITY
CITY OF INDEPENDENCE · JACKSON COUNTY · MISSOURI



SCALE IN FEET 0 100 200 300 400

HARE AND HARE CITY PLANNERS
KANSAS CITY · MISSOURI
COMPLETION DATE 12-19-61
REVISION DATE 3-15-65

CODE NO. R-225-B

SD-3

Accession Number M107

Description

A map titled "Land Disposal Plan: Northwest Parkway Project, MO R-31, Land Clearance for Redevelopment Authority, City of Independence, Jackson County, Missouri." The map, accompanied by a table, describes the usage of specific plots of land, their dimensions, and other details. Handwriting on the front reads: "175-200, 7 Acres, 300 ff, 310, M."

Date(s)

March 15, 1965

Cartographer Hare and Hare, City Planners, Kansas City, Missouri.

Keywords [Cities and towns](#)

Photo Color Color

Physical Size 24 X 18 inches

Related Collection (Plain)

Harry S. Truman Post-Presidential Papers

Restrictions Unrestricted

Scale 1 inch = 100 feet

TIF Identifier M107.tif

Rights

This item is in the public domain and can be used freely without further permission.

Note: If you use this image, rights assessment and attribution are your responsibility.

Credit: Hare and Hare, City Planners, Kansas City, Missouri.

Courtesy Harry S. Truman Library & Museum, Independence, Missouri.

Attention media: Please make note of this item's map number. Print out this page and retain it for your permissions records before downloading this image file for possible publication. Library staff cannot sign permissions forms or provide additional paperwork. The Library charges no usage fees for downloaded images. Fees are charged for higher resolution scans.