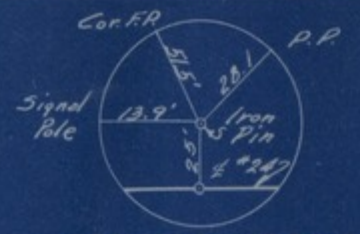


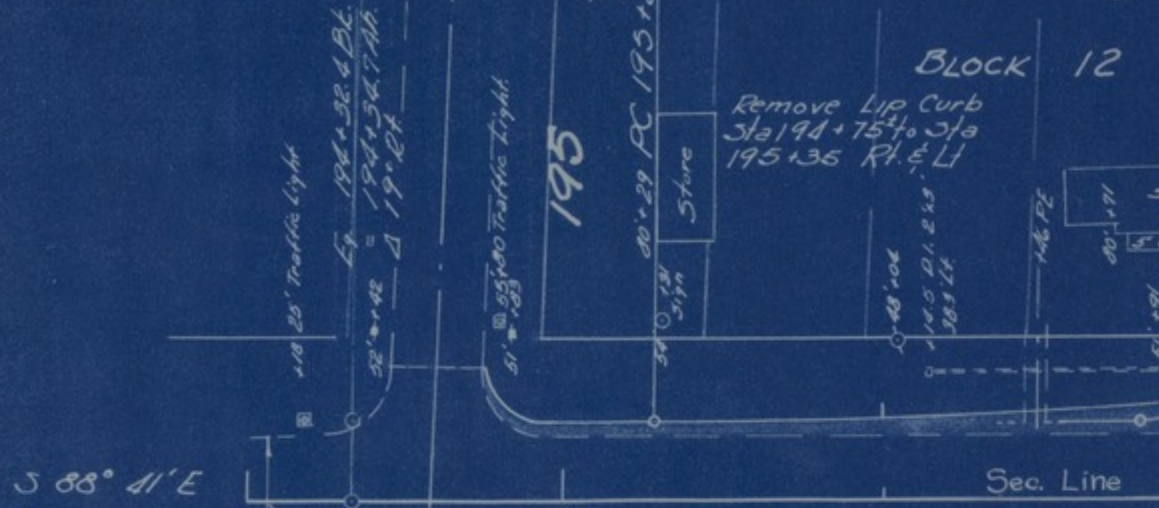
PLAN	SURVEYED	DATE
	PLOTTED	BY
NOTE BOOK NO.	ALIGNMENT CHECKED RT. OF WAY CHECKED	

Note:
Ties given 25' Lt
E Rte. #24
i.e. (Independence)



SW 4 SE 4
34-50-32

P.I. Eq. $194 + 34.7 \text{ Ah}$
= $194 + 32.4 \text{ BK.}$
 $\Delta 10^\circ 19' \text{ Rt.}$



NW 4 NE 4
3-49-32

+58.7 E N. RIVER

Ramp A
PI 195 + 86.92 12
 $\Delta 6^\circ 45' \text{ Rt}$
D 3° 00'
T 112.63
L 225.0
R 1909.86

Sta 196 + 46 Ramp Bld. Drain Basin Surface Drain R

Accession Number

M90

Description

A State Highway Commission of Missouri plan of changes to U.S. Route 24 at the location of the proposed Harry S. Truman Library. Handwriting on the back reads: "55."

Date(s)

September 21, 1955

Cartographer

State Highway Commission of Missouri. Approved by Rex M. Whitton, Chief Engineer.

Keywords

[Roads](#)

[Presidential libraries](#)

Photo Color

Color

Physical Size

22 3/4 X 36 1/4 inches

Related Collection (Plain)

Robert P. Weatherford, Jr. Papers

Restrictions

Unrestricted

TIF Identifier

M90.tif

Rights

This item is in the public domain and can be used freely without further permission.

Note: If you use this image, rights assessment and attribution are your responsibility.

Credit: State Highway Commission of Missouri. Approved by Rex M. Whitton, Chief Engineer.

Courtesy Harry S. Truman Library & Museum, Independence, Missouri.

Attention media: Please make note of this item's map number. Print out this page and retain it for your permissions records before downloading this image file for possible publication. Library staff cannot sign permissions forms or provide additional paperwork. The Library charges no usage fees for downloaded images. Fees are charged for higher resolution scans.