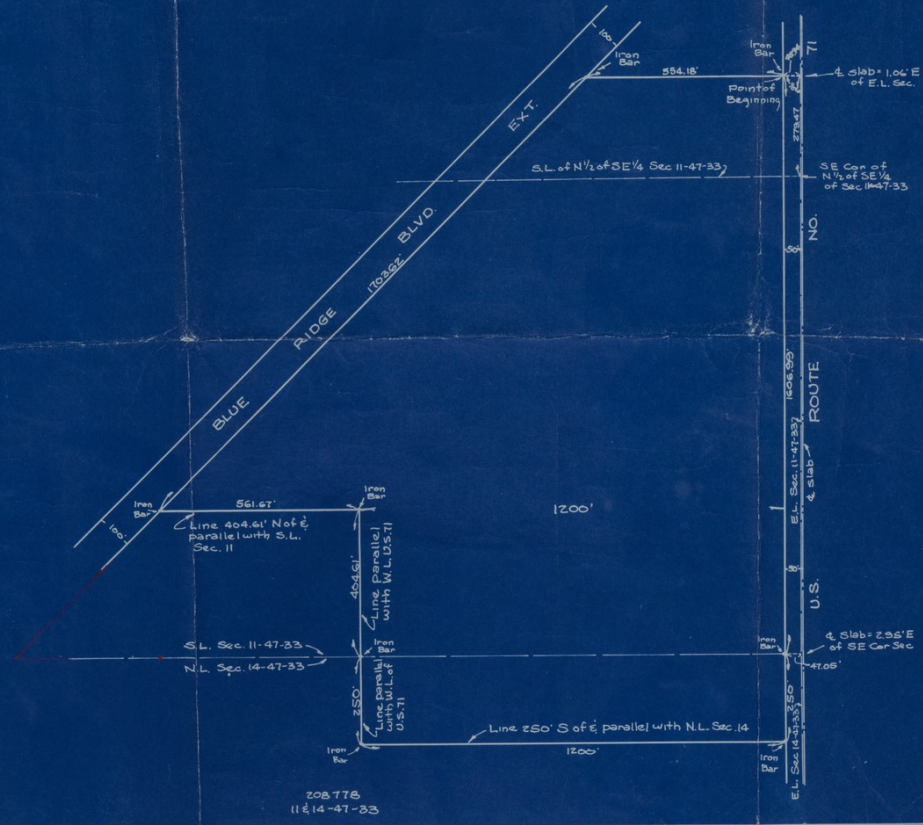


**CERTIFICATE OF SURVEY:** THIS IS TO CERTIFY that we have this day made a survey of premises herein described, and that the results of said survey are represented in the following plat:

**DESCRIPTION:** All that part of Sections 11 and 14, Township 47, Range 33, in Jackson County, Missouri, described as follows: Commencing at a point in the East Line of said Section 11, 279.47 ft. North of the Southeast Corner of the North Half (N $\frac{1}{2}$ ) of the Southeast Quarter of said Section 11; thence West, at right angles to said East Line, a distance of 489.6 ft. to a point in the West Line of U.S. Route Number 71 as now established, and the point of beginning of the tract to be herein described; thence, continuing West along the above described line, a distance of 554.18 ft. more or less, to its intersection with the Southeastern Line of Blue Ridge Boulevard Extension as now established; thence Southwesterly along said Southeastern Line, a distance of 1703.62 ft. to a point; thence East along a line which is 404.61 ft. North of, and parallel with, the South Line of said Section 11, a distance of 561.67 ft.; thence South and parallel with said West Line of U.S. Route Number 71, a distance of 404.61 ft. to a point on the South Line of said Section 11; thence continuing South and parallel with said West Line of U.S. Route Number 71, a distance of 250 ft.; thence East along a line which is parallel with the North Line of said Section 14, a distance of 1200 ft. to its intersection with the West Line of U.S. Route Number 71; thence North along said West Line 250 ft. to a point on the North Line of said Section 14; thence continuing North along said West Line, a distance of 1206.83 ft. more or less to the point of beginning, containing 50 Acres more or less.

Tuttle-Ayers-Woodward Co., Engrs.  
By: *J. Hall*

For:  
J.V. Truman  
July 26, 1955  
Aug 9, 1955  
JVA



**Accession Number** M118

**Description**

A "Certificate of Survey" of the Harry S. Truman Farm in Grandview, Missouri. The blueprint, produced for J. Vivian Truman, presumably lays out the boundaries for the planned Truman Corners Shopping Center and other development. The unsold remainder of the Truman Farm plot encompasses the bottom left corner of the blueprint. A portion of the blueprint is filled in with red pencil.

**Date(s)**

August 9, 1955

**Cartographer** Engineers: Tuttle-Ayers-Woodward Company.

**Keywords** [Cities and towns](#) [Presidential residences](#)

**Photo Color** Color

**Physical Size** 17 X 19 3/4 inches

**Related Collection (Plain)**

Harry S. Truman Post-Presidential Papers

**Restrictions** Undetermined

**Scale** 1 inch = 200 feet

**TIF Identifier** M118.tif

### **Rights**

The Library is unaware of any copyright claims to this item; use at your own risk.

**Note: If you use this image, rights assessment and attribution are your responsibility.**

Credit: Engineers: Tuttle-Ayers-Woodward Company.

Courtesy Harry S. Truman Library & Museum, Independence, Missouri.

Attention media: Please make note of this item's map number. Print out this page and retain it for your permissions records before downloading this image file for possible publication. Library staff cannot sign permissions forms or provide additional paperwork. The Library charges no usage fees for downloaded images. Fees are charged for higher resolution scans.