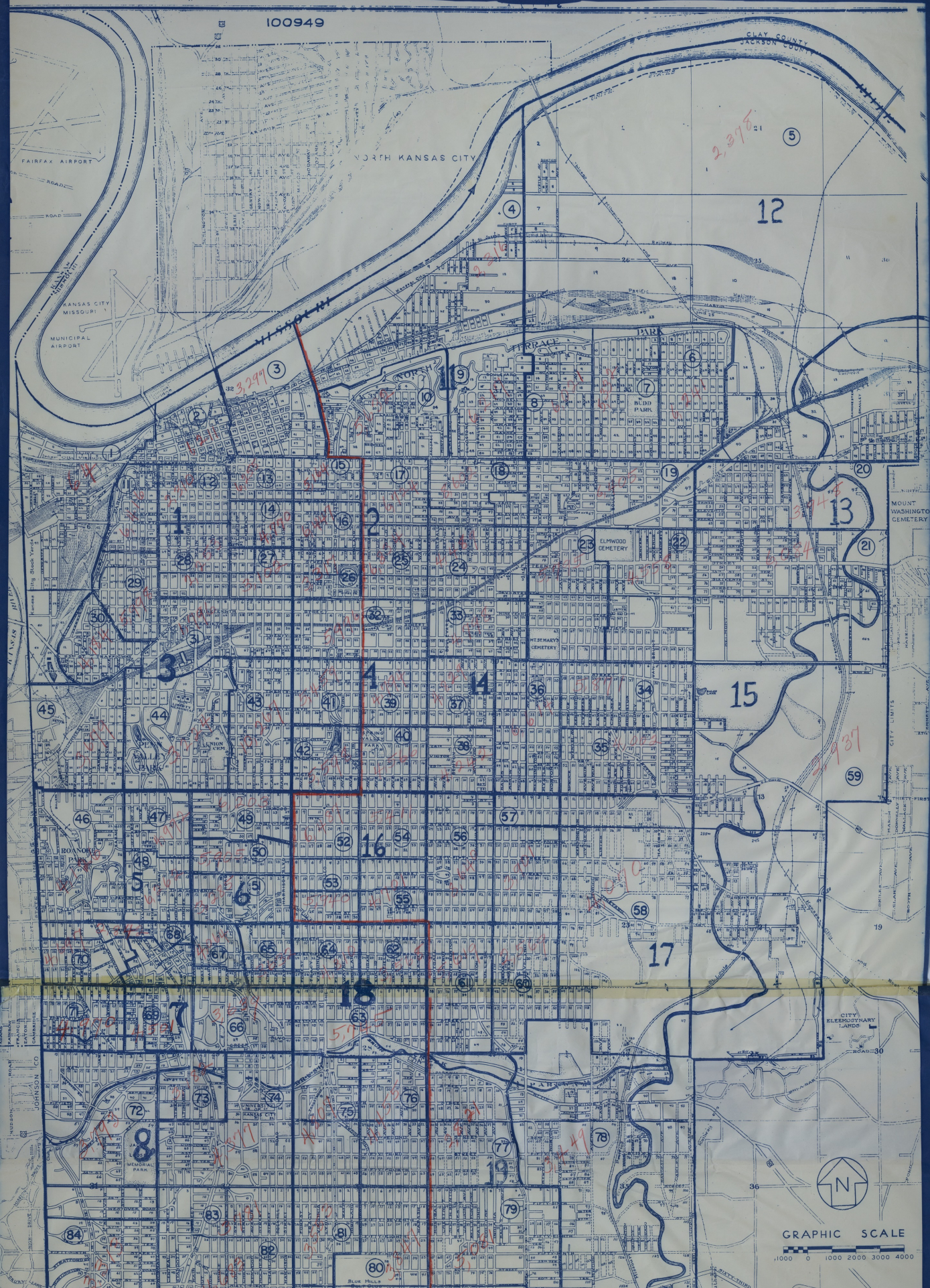


100949



GRAPHIC SCALE

1000 0 1000 2000 3000 4000

Accession Number M128

Description

Two maps, taped together, of Kansas City, Missouri. The map shows city limits and ward lines, electoral district boundaries and numbers, tract boundaries and numbers, schools, cemeteries, parks, and other landmarks. Annotations, in red, are presumably population figures used in redistricting. Handwriting on the back reads: "File in cupboard #3, Room 71-E. Office Bldg. Attachment to x card re. corres. from Wm. Boyle on redistricting Missouri for Congressional representation. Filed by Wm. Leans, 9-19-51, E.B."

Date(s)

March 3, 1949

Cartographer Kansas City, Missouri, City Plan Commission. Annotations: Unknown.

Keywords [Cities and towns](#)

Photo Color Color

Physical Size 74 3/4 X 37 inches

Related Collection (Plain)

William M. Boyle, Jr. Papers

Restrictions Unrestricted

Scale 4 inches = 4000 feet

TIF Identifier M128.tif

Rights

This item is in the public domain and can be used freely without further permission.

Note: If you use this image, rights assessment and attribution are your responsibility.

Credit: Kansas City, Missouri, City Plan Commission. Annotations: Unknown.

Courtesy Harry S. Truman Library & Museum, Independence, Missouri.

Attention media: Please make note of this item's map number. Print out this page and retain it for your permissions records before downloading this image file for possible publication. Library staff cannot sign permissions forms or provide additional paperwork. The Library charges no usage fees for downloaded images. Fees are charged for higher resolution scans.