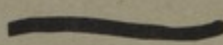




# NORTH I

RAILROADS



RIVERS

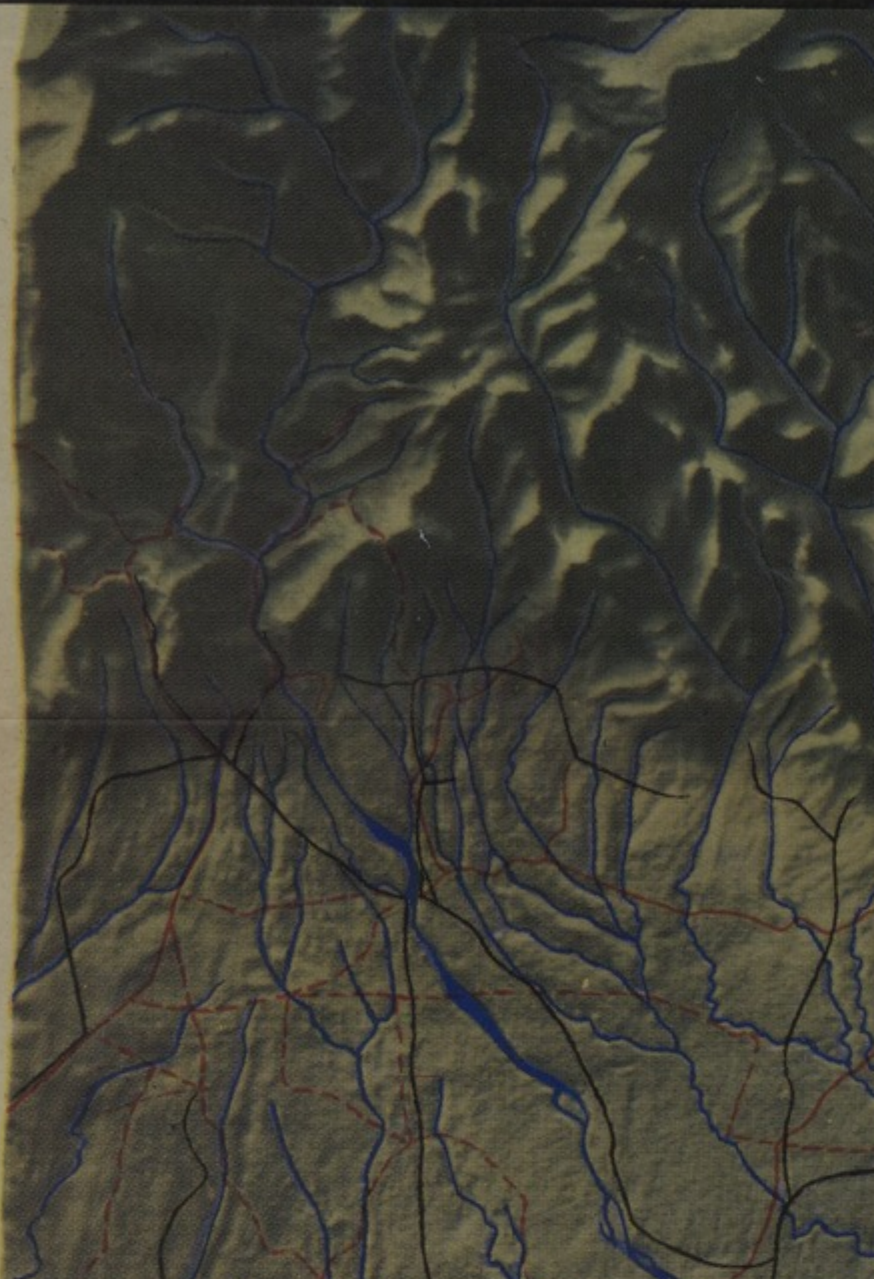


UNSURFACED ROADS



UNDER CONSTRUCT

CART TRACKS; SOME MOTORABLE OTHERS JEEP



Accession Number

M1756-01

**Description**

The American map of northern Burma shows railroads, rivers, surfaced roads, unsurfaced roads, roads under construction, cart tracks, trails, relief, and other details. This map is located on the back of M1756.

**Date(s)**

April 10, 1944

Cartographer

Army Information Branch, Army Service Forces, War Department. Prepared in the Research and Analysis Branch of the Office of Strategic Services.

Keywords

[World War, 1939-1945](#)

Photo Color

Color

Physical Size

35 X 47 inches

Related Collection (Plain)

Thirty-Fifth Division Association Records

Restrictions

Unrestricted

Scale

3 3/4 inches = 70 miles

TIF Identifier

M1756-01.tif

Rights

This item is in the public domain and can be used freely without further permission.

**Note: If you use this image, rights assessment and attribution are your responsibility.**

Credit: Army Information Branch, Army Service Forces, War Department. Prepared in the Research and Analysis Branch of the Office of Strategic Services.

Courtesy Harry S. Truman Library & Museum, Independence, Missouri.

Attention media: Please make note of this item's map number. Print out this page and retain it for your permissions records before downloading this image file for possible publication. Library staff cannot sign permissions forms or provide additional paperwork. The Library charges no usage fees for downloaded images. Fees are charged for higher resolution scans.