



70	71
85	86
100	101

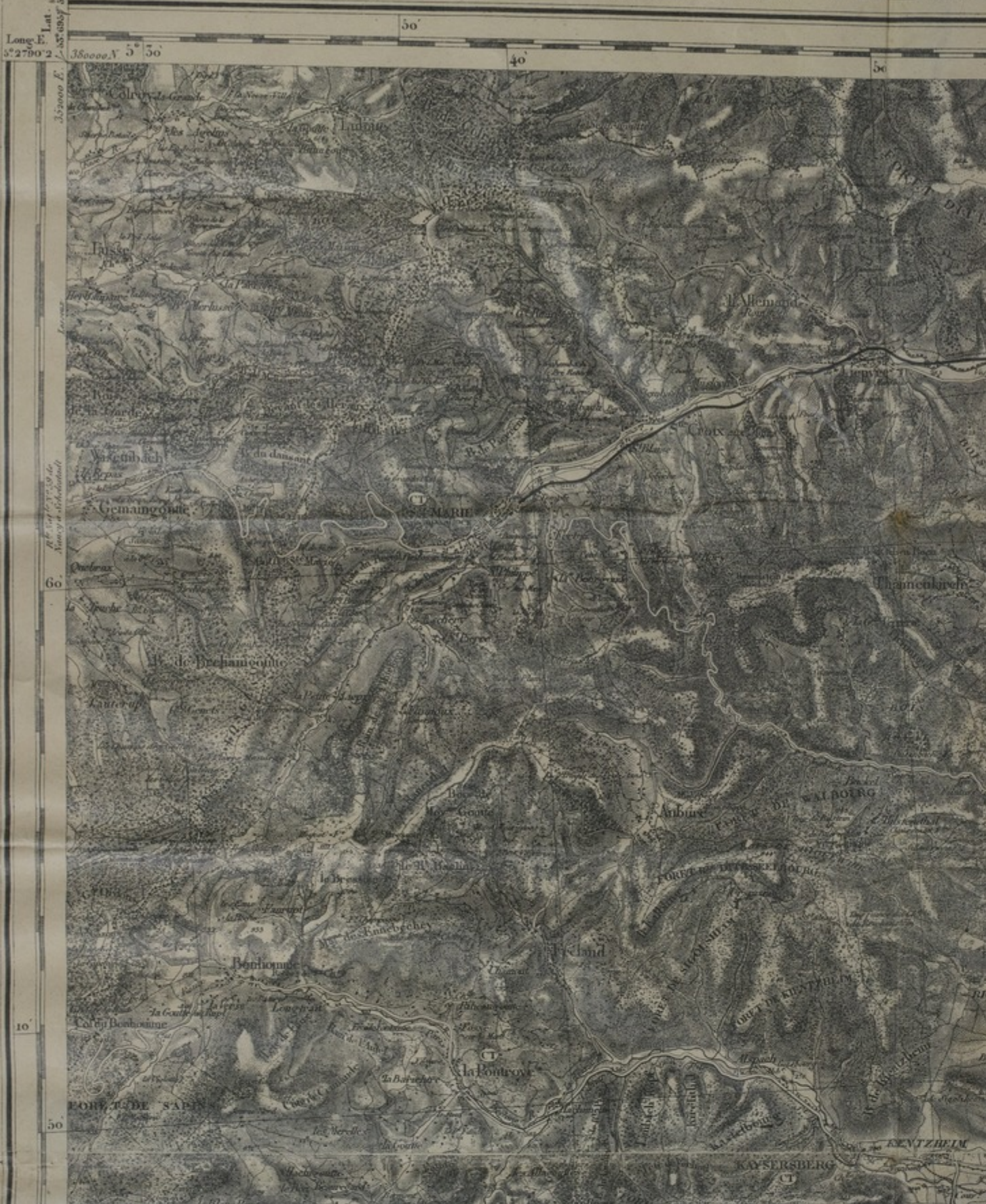
a	b		
o	c	i	p
q	e	f	d
m	k	l	r
u			e

Blondat, Lieut. a 288 et 289  
 d'Urval (Cher), Cap. b 282  
 Michel, Lieut. c id  
 de Boireville, id. d id

Lombard, Lieut. e 283  
 Ducart, id. f id  
 de Coffy, id. h id  
 de Gravillon, id. i 283 et 284

Les Travaux sur le Terrain ont été exécutés par M.M.<sup>rs</sup>  
 de Guibert, Cap. k 285  
 de St Paul, Lieut. l id  
 de Lyle, id. m 285 et 286  
 Delteil, id. n 287

Loreille, de Beauport, Martier, de Tourville



Long. E. 5° 27' 02"

Lat. 50° 08' 50"

380000 X 5 50

350000 E.

Revue des cartes de France

60

10

50

(Linnal)

Accession Number

M989

## **Description**

A French map titled "Colmar." The map, numbered 86 in a series, is annotated to show the movement of Company A of the 137th Infantry from Bois de Langenfeld through Sondernach, Metzeral, Muhlbach, and Sultzeren. A hand-drawn graph on the back shows the position of this map in relation to others in a series.

## **Date(s)**

May 10, 1916

Cartographer

Depot de la Guerre.

Keywords

[World War, 1914-1918](#)

Photo Color

Color

Physical Size

23 1/2 X 33 1/2 inches

Related Collection (Plain)

Thirty-Fifth Division Association Records

Restrictions

Unrestricted

Scale

1 inch = 2 kilometers

TIF Identifier

M989.tif

Rights

This item is in the public domain and can be used freely without further permission.

**Note: If you use this image, rights assessment and attribution are your responsibility.**

Credit: Depot de la Guerre.

Courtesy Harry S. Truman Library & Museum, Independence, Missouri.



Attention media: Please make note of this item's map number. Print out this page and retain it for your permissions records before downloading this image file for possible publication. Library staff cannot sign permissions forms or provide additional paperwork. The Library charges no usage fees for downloaded images. Fees are charged for higher resolution scans.