



70	71
85	86
100	101

a	b	p
o	i	
q	e	d
m	k	r
n	u	e

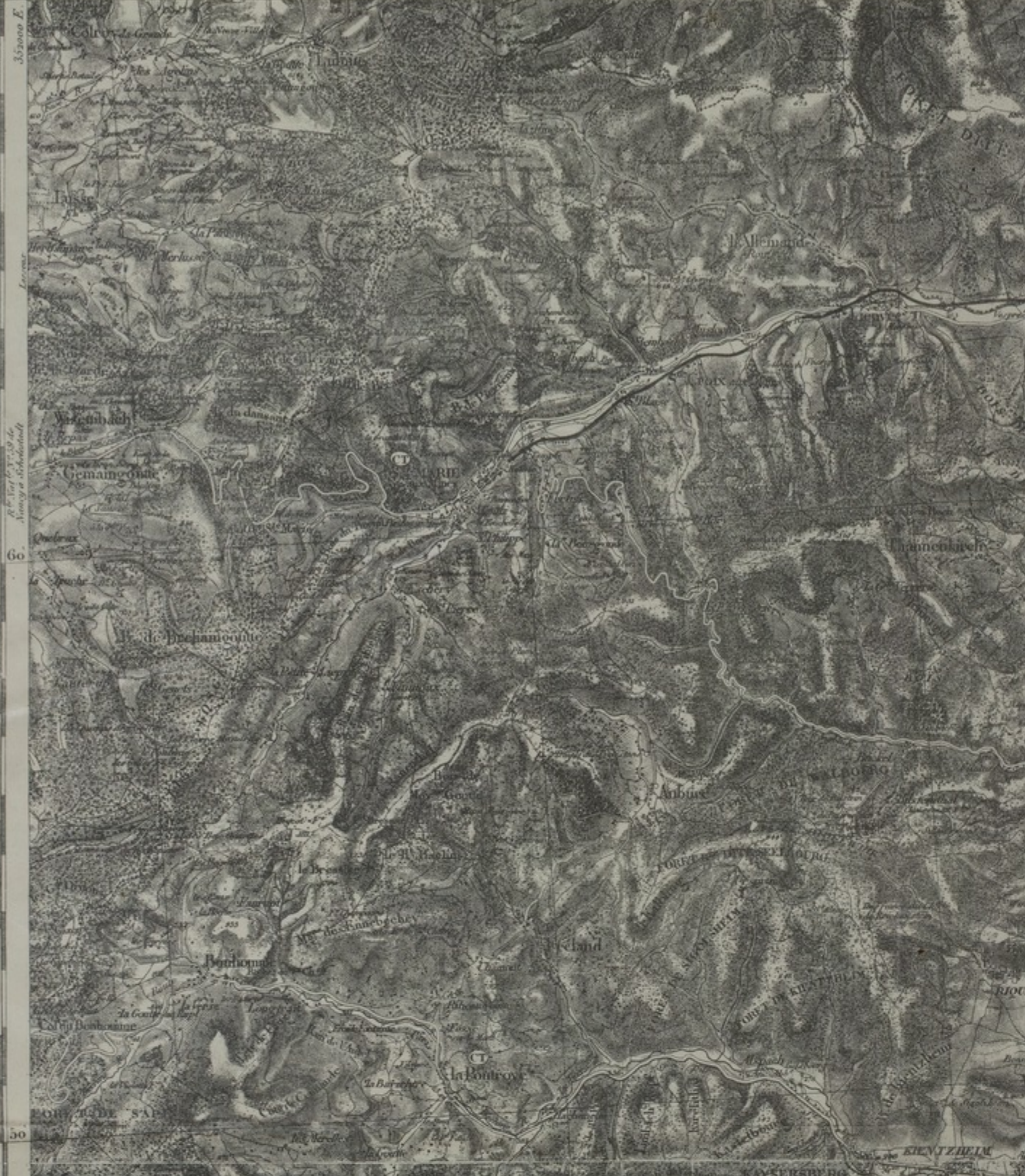
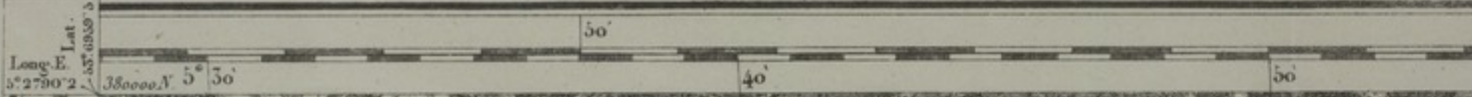
Blondat, Lieut<sup>e</sup> a 2820 et 2829  
 d'Arbal (C<sup>te</sup>), Cap<sup>e</sup> b 2830  
 Michel, Lieut<sup>e</sup> c id  
 de Doireuillette, id d id

Lombard, Lieut<sup>e</sup> e 2830  
 Douart, id f id  
 de Cotty, id h id  
 de Gravillon, id i 2830 et 2831

de Gilbert, Cap<sup>e</sup> k 2830  
 de St Paul, Lieut<sup>e</sup> l id  
 de Lyle, id m 2830 et 2831  
 Deltel, id n 2830

Loreille, Cap<sup>e</sup> o 2830  
 de Beaufort, Lieut<sup>e</sup> p id  
 Macher, id q 2830 et 2831  
 de Tourville, id r 2830

Les Travaux sur le Terrain ont été exécutés par M.M.



Accession Number

M988

**Description**

A French map that is numbered 86 in a series and titled "Colmar."

**Date(s)**

May 10, 1916

Cartographer

Depot de la Guerre.

Keywords

[World War, 1914-1918](#)

Photo Color

Color

Physical Size

23 3/4 X 33 1/2 inches

Related Collection (Plain)

Thirty-Fifth Division Association Records

Restrictions

Unrestricted

Scale

1 inch = 2 kilometers

TIF Identifier

M988.tif

Rights

This item is in the public domain and can be used freely without further permission.

**Note: If you use this image, rights assessment and attribution are your responsibility.**

Credit: Depot de la Guerre.

Courtesy Harry S. Truman Library & Museum, Independence, Missouri.

Attention media: Please make note of this item's map number. Print out this page and retain it for your permissions records before downloading this image file for possible publication. Library staff cannot sign permissions forms or provide additional paperwork. The Library charges no usage fees for downloaded images. Fees are charged for higher

resolution scans.