



PLAT OF SURVEY OF Lands in Sections  
11 & 14, Twp 47, Range 33 in Jackson County, Mo.

For:

J.V. Truman

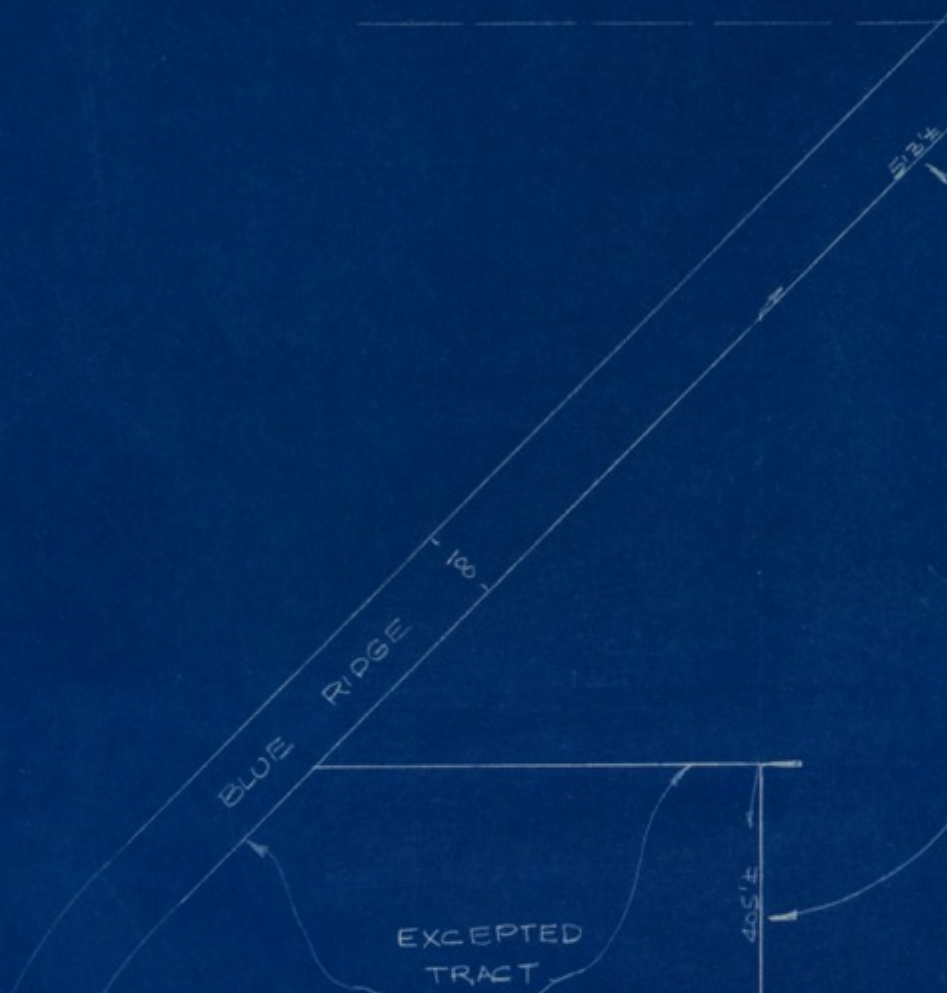
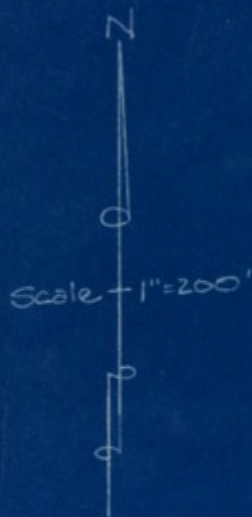
June 1855

By:

Tuttle-Ayers-Woodward Co.

Engineers.

Note: All acreage is approximate



Accession Number

M122

**Description**

A survey of the Harry S. Truman Farm in Grandview, Missouri. The blueprint, produced for J. Vivian Truman, presumably shows the early planning for the Truman Corners Shopping Center and other development. The unsold remainder of the Truman Farm plot encompasses the area labeled "Excepted Tract."

**Date(s)**

ca.

June, 1955

Cartographer

Engineers: Tuttle-Ayers-Woodward Company.

Keywords

[Cities and towns](#)

[Presidential residences](#)

Photo Color

Color

Physical Size

20 3/4 X 17 inches

Related Collection (Plain)

Harry S. Truman Post-Presidential Papers

Restrictions

Undetermined

Scale

1 inch = 200 feet

TIF Identifier

M122.tif

Rights

The Library is unaware of any copyright claims to this item; use at your own risk.

**Note: If you use this image, rights assessment and attribution are your responsibility.**

Credit: Engineers: Tuttle-Ayers-Woodward Company.

Courtesy Harry S. Truman Library & Museum, Independence, Missouri.

Attention media: Please make note of this item's map number. Print out this page and retain it for your permissions records before downloading this image file for possible publication. Library staff cannot sign permissions forms or provide additional paperwork. The Library charges no usage fees for downloaded images. Fees are charged for higher resolution scans.