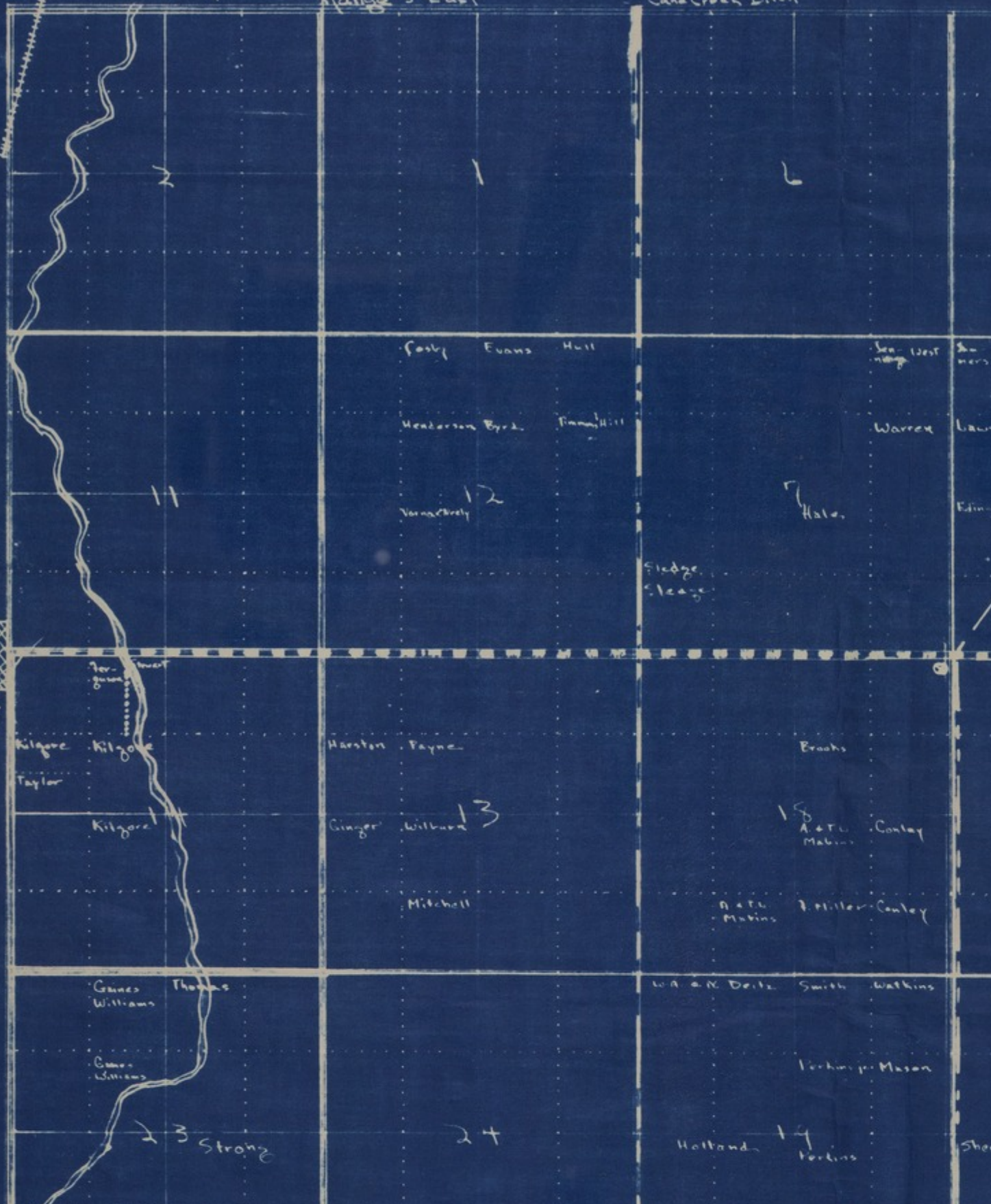


Cane Creek

Range 5 East

Cane Creek Ditch



lady-
silk

Kilgore
Taylor

Kilgore

Ganes Williams Thomas

Ganes Williams

23 Strong

Harston Payne

Ginger Wilburn 13

Mitchell

24

Fosby Evans Hull

Henderson Byrd Finnerhill

Vannabrey 12

Sea West Summers

Warren Law

Hale Edin

Sledge Cleary

Bracks

18 A & L Mabey Conley

A & L Mabey J. Miller Conley

W. A. & R. Dritz Smith Watkins

Perkins Mason

Holland 14 Perkins Sher

Accession Number

M192

Description

A map titled "Township 22 North, Butler County, Missouri." The map shows roads, rivers, creeks, sloughs, ditches, railroads, and land ownership. Handwriting on the back reads: "30" and "Senatorial Papers of Harry S. Truman. File: O.P.A., May 1944. Ltr: May 31, 1944."

Date(s)

ca.

April, 1943

Cartographer

Annie Laura Jagers.

Keywords

[Cities and towns](#)

Photo Color

Color

Physical Size

22 X 27 1/2 inches

Related Collection (Plain)

Harry S. Truman Papers as U.S. Senator and Vice President

Restrictions

Undetermined

TIF Identifier

M192.tif

Rights

The Library is unaware of any copyright claims to this item; use at your own risk.

Note: If you use this image, rights assessment and attribution are your responsibility.

Credit: Annie Laura Jagers.

Courtesy Harry S. Truman Library & Museum, Independence, Missouri.

Attention media: Please make note of this item's map number. Print out this page and retain it for your permissions records before downloading this image file for possible publication. Library staff cannot sign permissions forms or provide additional paperwork. The Library charges no usage fees for downloaded images. Fees are charged for higher resolution scans.