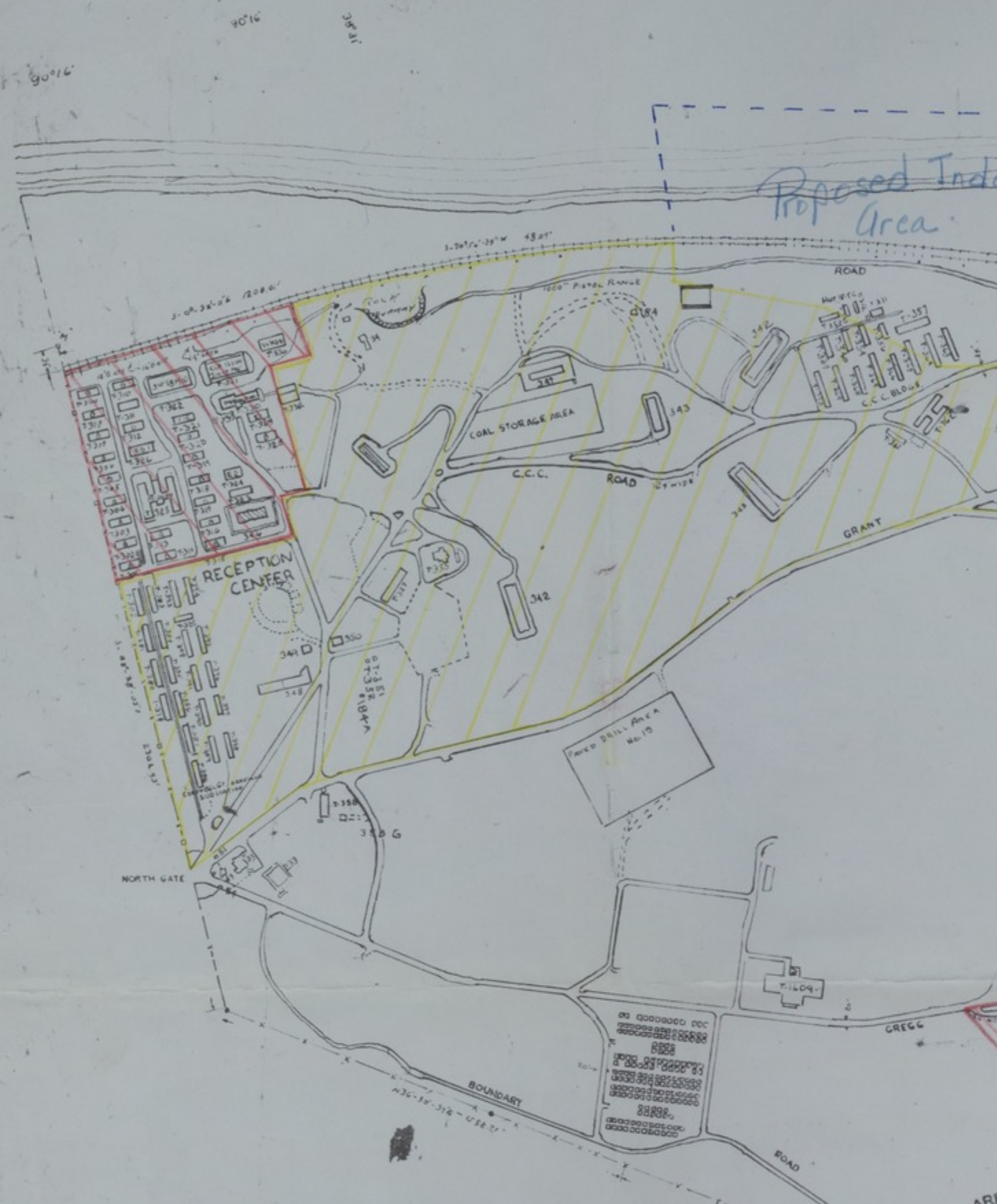


WAR DEPARTMENT



Accession Number

M170

Description

A 1943 map of the Jefferson Barracks Military Post in Lemay, Missouri. The map shows post boundary lines, railroads, roads, bridges, buildings, fences, U.S. river gauges, U.S. geological benchmarks, and other details. The map has been annotated to show the proposed post-World War II reorganization of the facility. The annotated legend highlights areas under jurisdiction of the Army, areas to be applied for by the state, areas under jurisdiction of the Public Housing Administration, areas to be applied for by the county, areas under jurisdiction of the Veterans Administration, and areas to be sold by the War Assets Administration. Handwriting on the front reads: "Proposed Industrial Area," "Reserve Officers," "Air National Guard," and "FPHA." Handwriting on the back reads: "Small General Plan" and "O.F. 572, Jefferson Barracks National Monument (Proposed), Ltr., June 21, 1949."

Date(s)

ca.

January, 1943

Cartographer

War Department.

Keywords

[Cities and towns](#)

[Military bases](#)

Photo Color

Color

Physical Size

20 1/4 X 37 1/2 inches

Related Collection (Plain)

Official File

Restrictions

Unrestricted

Scale

2 1/2 inches = 1000 feet

TIF Identifier

M170.tif

Rights

This item is in the public domain and can be used freely without further permission.

Note: If you use this image, rights assessment and attribution are your responsibility.

Credit: War Department.

Courtesy Harry S. Truman Library & Museum, Independence, Missouri.

Attention media: Please make note of this item's map number. Print out this page and retain it for your permissions records before downloading this image file for possible publication. Library staff cannot sign permissions forms or provide additional paperwork. The Library charges no usage fees for downloaded images. Fees are charged for higher resolution scans.