

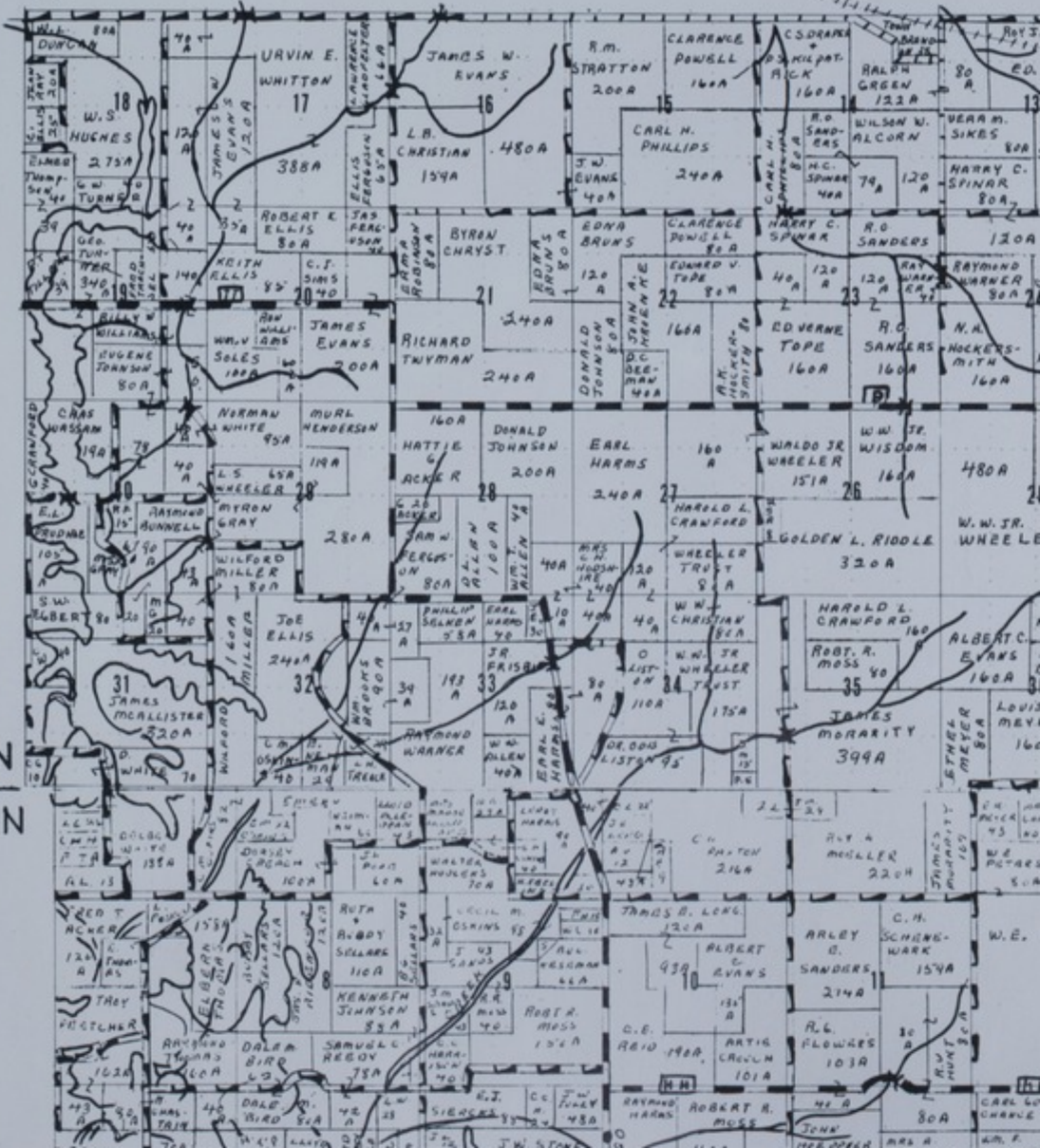
P E T T I S

R23W

C O U N T Y

T43N

T42N



Accession Number

M164

Description

A map of Benton County, Missouri. The map shows property lines and owners, businesses, city limits, township lines, roads, railroads, airfields, docks, dams, rivers, levees, bridges, churches, hospitals, cemeteries, schools, parks, and other governmental, commercial, historical, and recreational landmarks. Donated by George A. King.

Date(s)

ca.

1970

Cartographer

Advertising Enterprise, Marceline, Missouri.

Keywords

[Cities and towns](#)

Photo Color

Color

Physical Size

50 X 38 inches

Related Collection (Plain)

Miscellaneous Historical Documents Collection

Restrictions

Undetermined

TIF Identifier

M164.tif

Rights

The Library is unaware of any copyright claims to this item; use at your own risk.

Note: If you use this image, rights assessment and attribution are your responsibility.

Credit: Advertising Enterprise, Marceline, Missouri.

Courtesy Harry S. Truman Library & Museum, Independence, Missouri.

Attention media: Please make note of this item's map number. Print out this page and retain it for your permissions records before downloading this image file for possible publication. Library staff cannot sign permissions forms or provide additional paperwork. The Library charges no usage fees for downloaded images. Fees are charged for higher resolution scans.