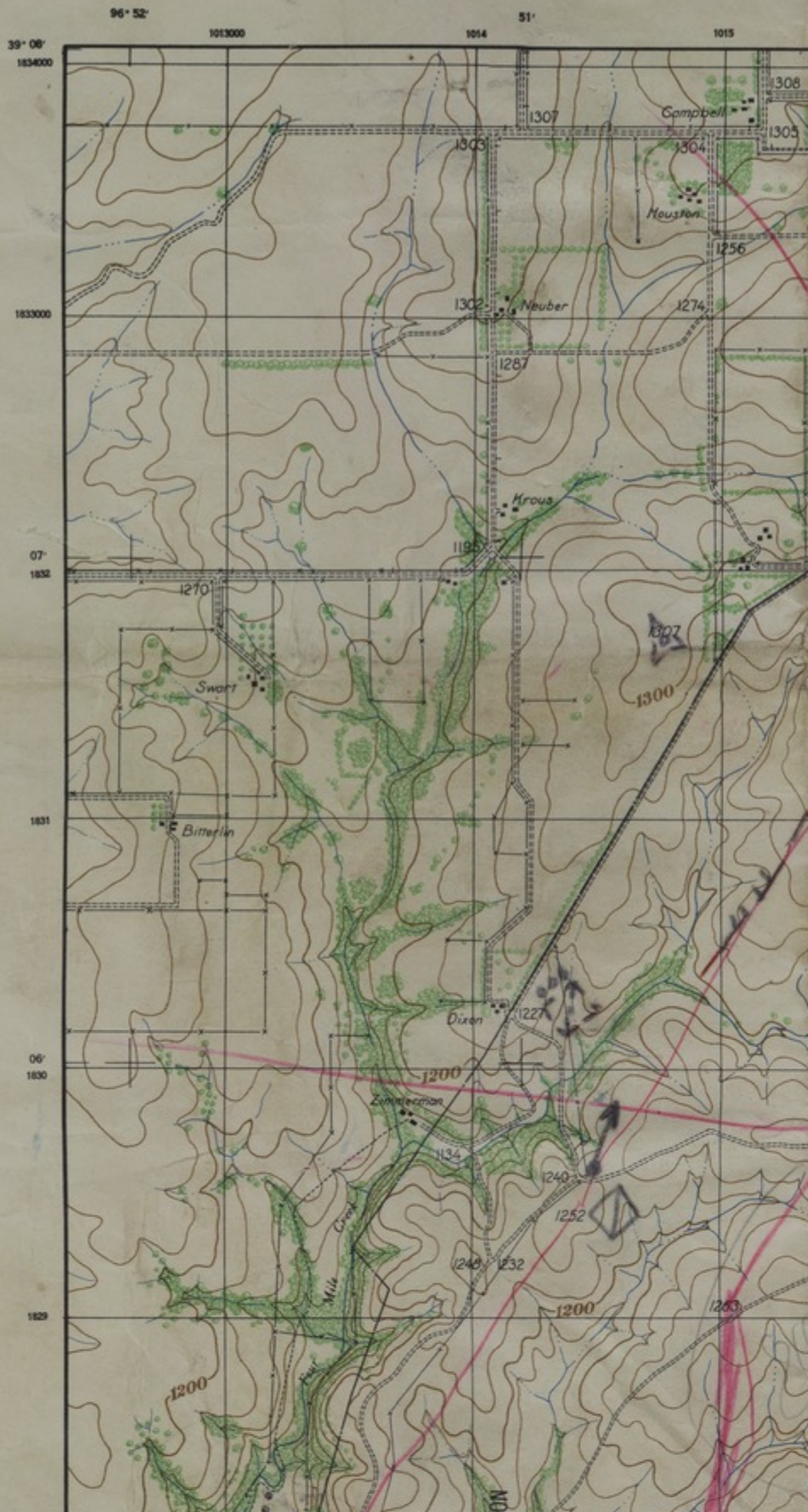


CORPS OF ENGINEERS
U. S. ARMY

*By 9 Call
line priv. on
P.S. Thru
Point 9 R. 1251
New River
detour back at ep*



Accession Number

M1964

Description

A map titled "Special Military Map: Fort Riley, Kansas, Grid Zone 'D'." Annotations state that this "situation map" was used during a field exercise by the Prov. Cavalry Division at 9:00 A.M. on August 20, 1937. Other annotations show unit positions, movement, and objectives. Donated by Theodore C. Bland.

Date(s)

ca.

1934

Cartographer

U.S. Army Corps of Engineers. Reproduced at the Command and General Staff School, Fort Riley.

Keywords

[World War, 1939-1945](#)

Photo Color

Color

Physical Size

25 X 38 inches

Related Collection (Plain)

Thirty-Fifth Division Association Records

Restrictions

Unrestricted

Scale

1:20,000

TIF Identifier

M1964.tif

Rights

This item is in the public domain and can be used freely without further permission.

Note: If you use this image, rights assessment and attribution are your responsibility.

Credit: U.S. Army Corps of Engineers. Reproduced at the Command and General Staff School, Fort Riley.

Courtesy Harry S. Truman Library & Museum, Independence, Missouri.

Attention media: Please make note of this item's map number. Print out this page and retain it for your permissions records before downloading this image file for possible publication. Library staff cannot sign permissions forms or provide additional paperwork. The Library charges no usage fees for downloaded images. Fees are charged for higher resolution scans.