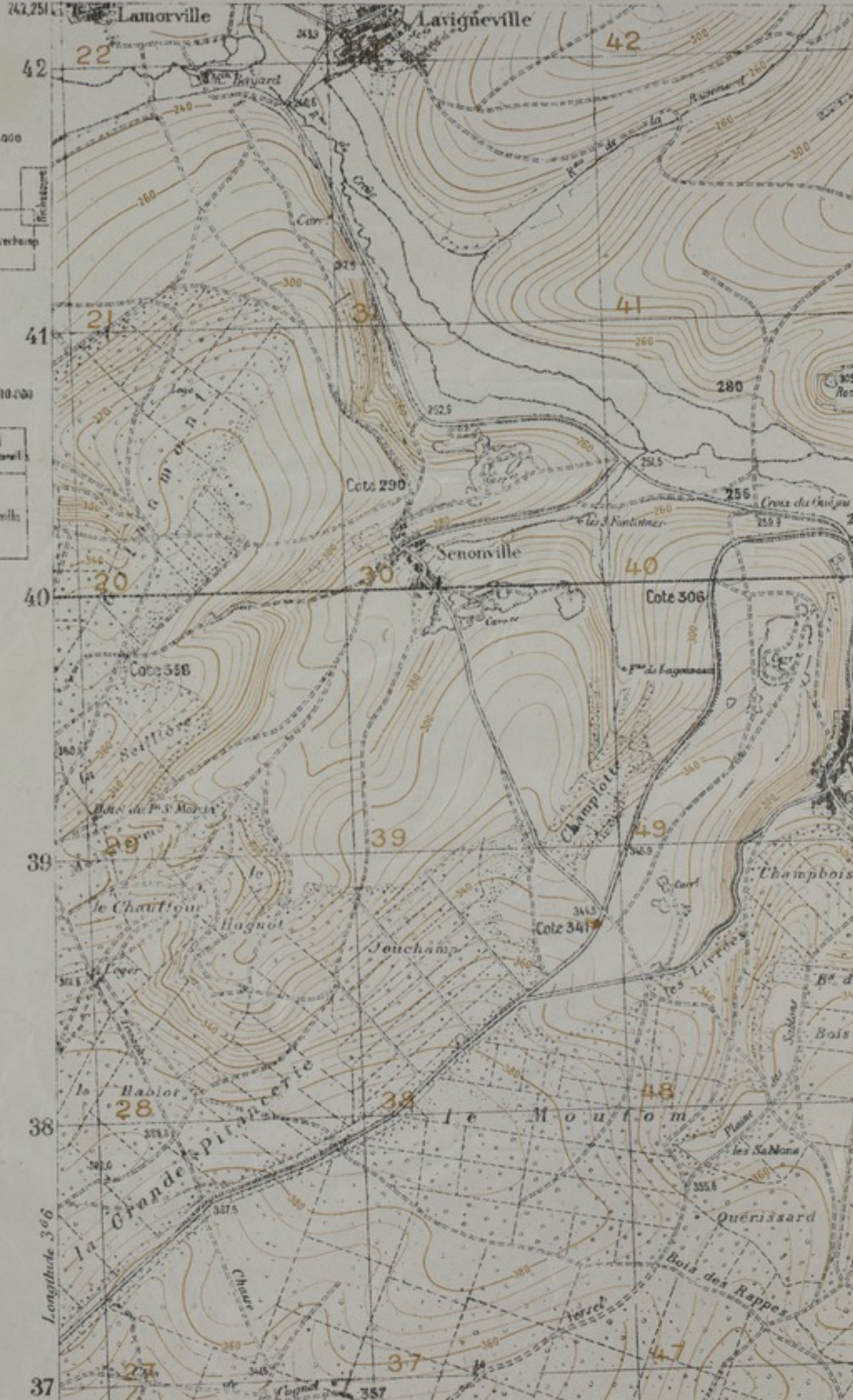


246-312 - GROUPE DES CANEVAS DE TIR.

311.965
242.251



Plans au 1/5000

Ally y Révoze	Forêt d'Apronval	Apronval	Bois de Champ
---------------	------------------	----------	---------------

Plans au 1/10000

Korl d'Apronval	Korl de Bazonval
Apronval	Bazonville

Longitude 306

37

Accession Number

M1089

Description

French map titled "St. Mihiel-C." The map, numbered 246-312 in a series, shows an area of Northeast France around Chaillon, Apremont, Bouconville, Raulecourt, St. Julien, and Gironville. "Capt. R. E. Truman" is written in pencil on the back of the map. Donated by Ralph E. Truman.

Date(s)

ca.

1918

Cartographer

Groupe des Canevas de Tir. Printed at Base Printing Plant, 29th Engineers, U. S. Army.

Keywords

[World War, 1914-1918](#)

Photo Color

Color

Physical Size

42 X 30 inches

Related Collection (Plain)

Thirty-Fifth Division Association Records

Restrictions

Unrestricted

Scale

1:20,000

TIF Identifier

M1089.tif

Rights

This item is in the public domain and can be used freely without further permission.

Note: If you use this image, rights assessment and attribution are your responsibility.

Credit: Groupe des Canevas de Tir. Printed at Base Printing Plant, 29th Engineers, U. S. Army.

Courtesy Harry S. Truman Library & Museum, Independence, Missouri.

Attention media: Please make note of this item's map number. Print out this page and retain it for your permissions records before downloading this image file for possible publication. Library staff cannot sign permissions forms or provide additional paperwork. The Library charges no usage fees for downloaded images. Fees are charged for higher resolution scans.