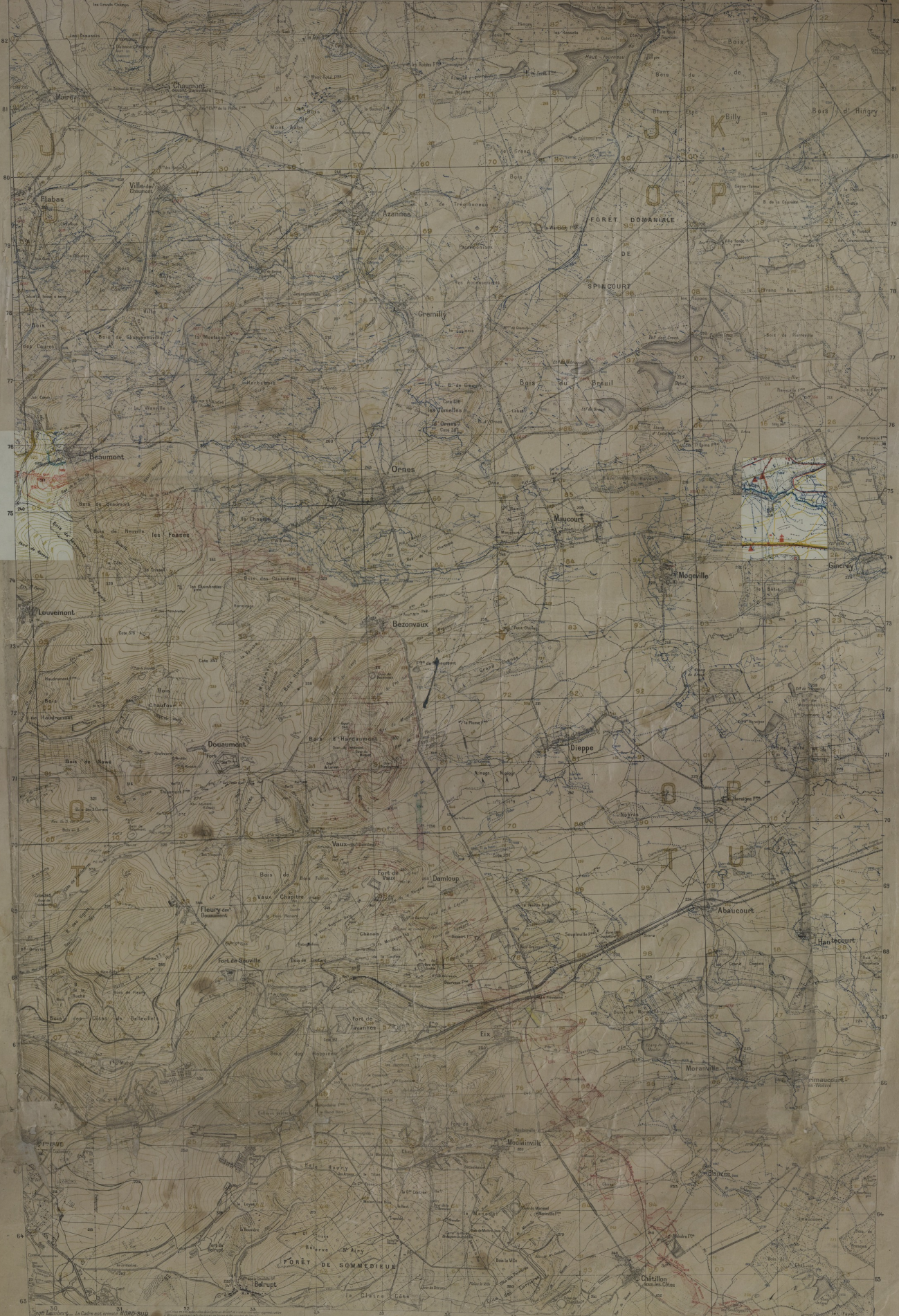


Plans au Tisser
Ornes
Mogeville
Abaucourt

Plans au Tisser
Mogeville
Abaucourt

Le cadre est tiré de la carte au 1:50,000, l'échelle de la carte au 1:25,000, l'échelle de la carte au 1:12,500, l'échelle de la carte au 1:6,250, l'échelle de la carte au 1:3,125, l'échelle de la carte au 1:1,562,5.



Accession Number M614

Description

French map titled "Etain-A," annotated to indicate front lines on 08/02/1918.

Date(s)

ca.

1918

Cartographer Groupe des Canevas de Tir.

Keywords [World War, 1914-1918](#)

Photo Color Color

Physical Size 41 X 29 inches

Related Collection (Plain)

Thirty-Fifth Division Association Records

Restrictions Unrestricted

Scale 1:20,000

TIF Identifier M614.tif

Rights

This item is in the public domain and can be used freely without further permission.

Note: If you use this image, rights assessment and attribution are your responsibility.

Credit: Groupe des Canevas de Tir.

Courtesy Harry S. Truman Library & Museum, Independence, Missouri.

Attention media: Please make note of this item's map number. Print out this page and retain it for your permissions records before downloading this image file for possible publication. Library staff cannot sign permissions forms or provide additional paperwork. The Library charges no usage fees for downloaded images. Fees are charged for higher resolution scans.