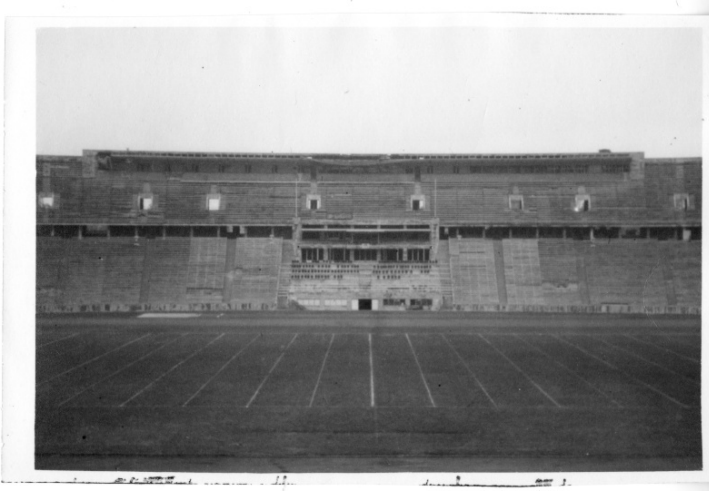


Olympic Stadium



Description

This is a view of the inside of the Olympic Stadium in Berlin, Germany.

Date(s)

ca.

1945

Accession Number

2017-1312

3 x 4.5 inches Black & White

Related Collection [Dawson, Donald S. Papers](#)

Rights The Library is unaware of any copyright claims to this item; use at your own risk.

Note: If you use this image, rights assessment and attribution are your responsibility.

Harry S. Truman Library & Museum.

Attention media: Please make note of this item's accession number. Print out this page and retain it for your permissions records before downloading this image file for possible publication. Library staff cannot sign permissions forms or provide additional paperwork. The Library charges no usage fees for downloaded images.