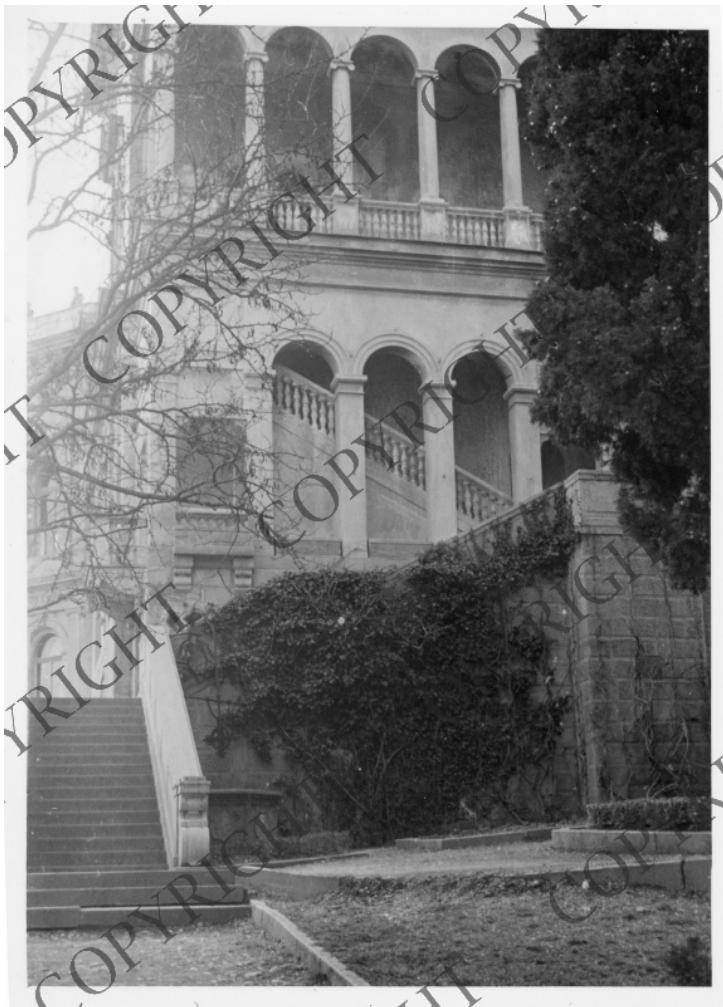


# Southeast Corner of Livadia Palace



## Description

The Southeast corner of Livadia Palace features the famous "Rasputin Steps" which led directly to Czarina Alexandra's apartment. During the Yalta Conference it was occupied by General George Marshall and Admiral Ernest King.

Date(s)

February 1945

Accession Number  
2017-639

2.5 x 3.5 inches    Black & White

Related Collection [Roberts, Frank N. Papers](#)

Keywords Palaces    World War, 1939-1945

Rights Copyrighted - This item is copyrighted and cannot be published, reproduced, or otherwise used without the explicit permission of the copyright holder.

**Note: If you use this image, rights assessment and attribution are your responsibility.**

Harry S. Truman Library & Museum.

Attention media: Please make note of this item's accession number. Print out this page and retain it for your permissions records before downloading this image file for possible publication. Library staff cannot sign permissions forms or provide additional paperwork. The Library charges no usage fees for downloaded images.