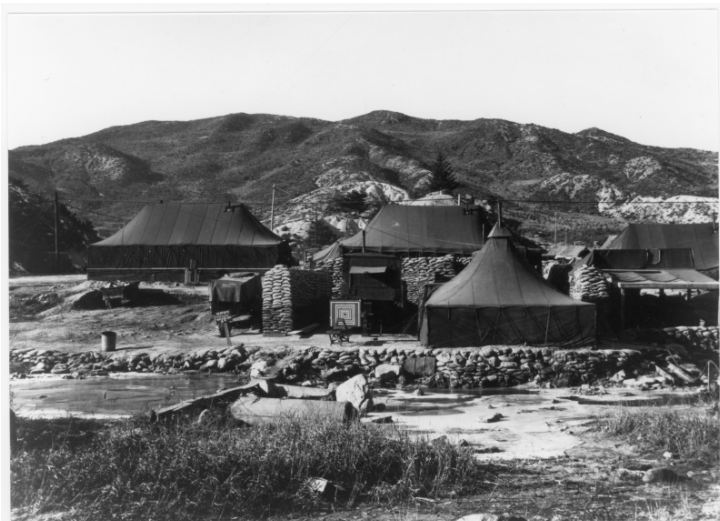


Military Base in Korea



Description

A military camp is situated near a mountain ridge in South Korea. From: Gene Putnam

Date(s)

ca.
1951

Accession Number 2017-145

5x7 inches (13x18 cm) Black & White

Keywords Korean War, 1950-1953

Rights Public Domain - This item is in the public domain and can be used freely without further permission.

Note: If you use this image, rights assessment and attribution are your responsibility.

Credit: Gene Putnam Harry S. Truman Library & Museum.

Attention media: Please make note of this item's accession number. Print out this page and retain it for your permissions records before downloading this image file for possible publication. Library staff cannot sign permissions forms or provide additional paperwork. The Library charges no usage fees for downloaded images.