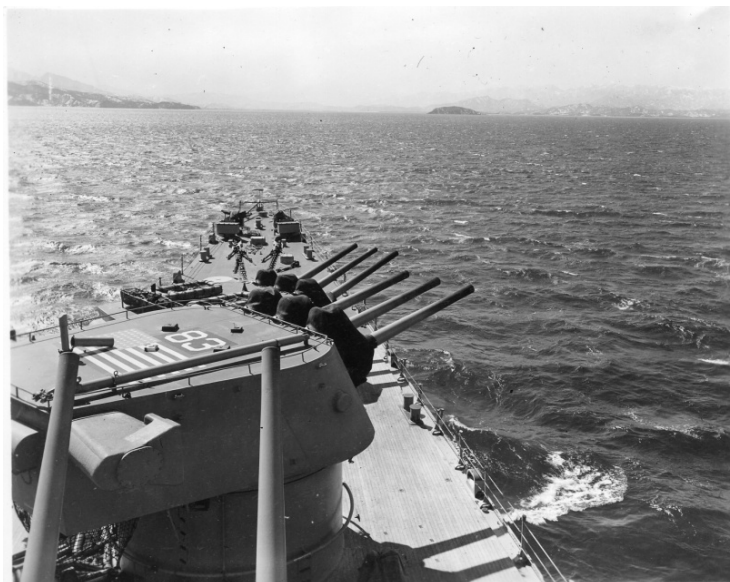


USS Manchester in Wonsan Harbor, Korea



Description

This is a photograph of the bow of the USS Manchester and Hwangt'o Do Island in the distance. USS Manchester Marines took the island on March 4, 1951.

Date(s)

ca.
1951

Accession Number 2015-0544

4x5 inches (10x13 cm) Black & White

Related Collection [Parks, Lewis S. Papers](#)

Keywords Islands Ships Korean War, 1950-1953

Rights Public Domain - This item is in the public domain and can be used freely without further permission.

Note: If you use this image, rights assessment and attribution are your responsibility.

Credit: U.S. Navy Harry S. Truman Library & Museum.

Attention media: Please make note of this item's accession number. Print out this page and retain it for your permissions records before downloading this image file for possible publication. Library staff cannot sign permissions forms or provide additional paperwork. The Library charges no usage fees for downloaded images.