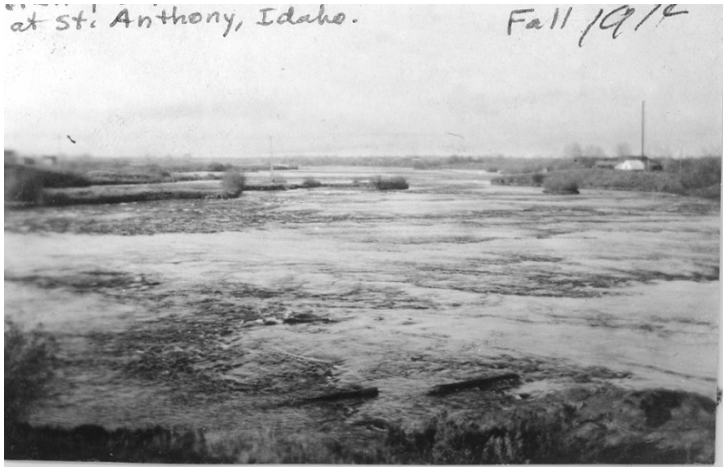


Henry's Fork of the Snake River at St. Anthony, Idaho



Description

Henry's Fork of the Snake River at St. Anthony, Idaho, in the Targhee National Forest.

Date(s)

1914

Accession Number

2009-3391

2 x 3 inches Black & White

Related Collection [Watts, Lyle Papers](#)

Keywords Forests and forestry Rivers

Rights Public Domain - This item is in the public domain and can be used freely without further permission.

Note: If you use this image, rights assessment and attribution are your responsibility.

Harry S. Truman Library & Museum.

Attention media: Please make note of this item's accession number. Print out this page and retain it for your permissions records before downloading this image file for possible publication. Library staff cannot sign permissions forms or provide additional paperwork. The Library charges no usage fees for downloaded images.