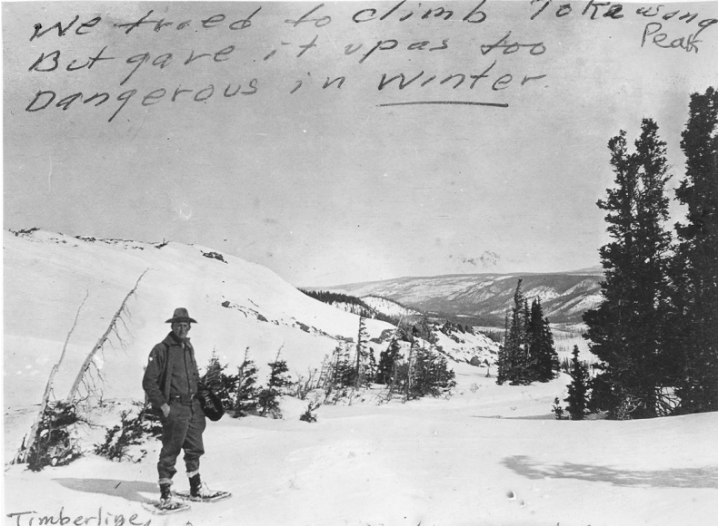


Forester Lyle F. Watts Stands at the Timberline on Tokewanna Peak



Description

Forester Lyle F. Watts stands at the Timberline on Tokewanna Peak in the Wasatch National Forest in Utah. He and others tried to climb to the summit, but abandoned their plans when they saw it was too dangerous in winter.

Date(s)

1914

Accession Number 2009-3298

3 x 4 inches Black & White

Related Collection [Watts, Lyle Papers](#)

Keywords Snow Forests and forestry

People Pictured Watts, Lyle F. (Lyle Ford), 1890-

Rights The Library is unaware of any copyright claims to this item; use at your own risk.

Note: If you use this image, rights assessment and attribution are your responsibility.

Harry S. Truman Library & Museum.

Attention media: Please make note of this item's accession number. Print out this page and retain it for your permissions records before downloading this image file for possible publication. Library staff cannot sign permissions forms or provide additional paperwork. The Library charges no usage fees for downloaded images.