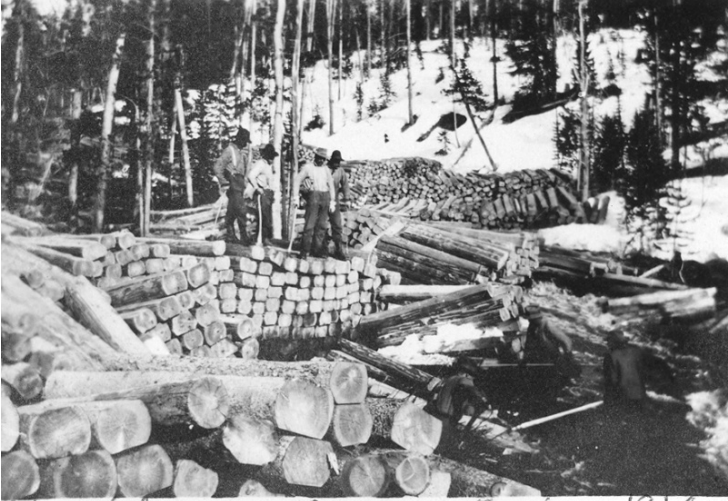


Moving Logs on the North Fork of Mill Creek in the Wasatch National Forest



Accession Number 2009-3250

2 x 3 inches Black & White

Related Collection [Watts, Lyle Papers](#)

Keywords Rivers Forests and forestry Logging

Rights The Library is unaware of any copyright claims to this item; use at your own risk.

Note: If you use this image, rights assessment and attribution are your responsibility.

Harry S. Truman Library & Museum.

Attention media: Please make note of this item's accession number. Print out this page and retain it for your permissions records before downloading this image file for possible publication. Library staff cannot sign permissions forms or provide additional paperwork. The Library charges no usage fees for downloaded images.

Description

Breaking Them In on the North Fork of Mill Creek refers to moving the logs into the water where they will travel to their next destination. This took place in driving camps. This one in the Wasatch National Forest. See photo 2009-3253 for a closer view.

Date(s)

1914