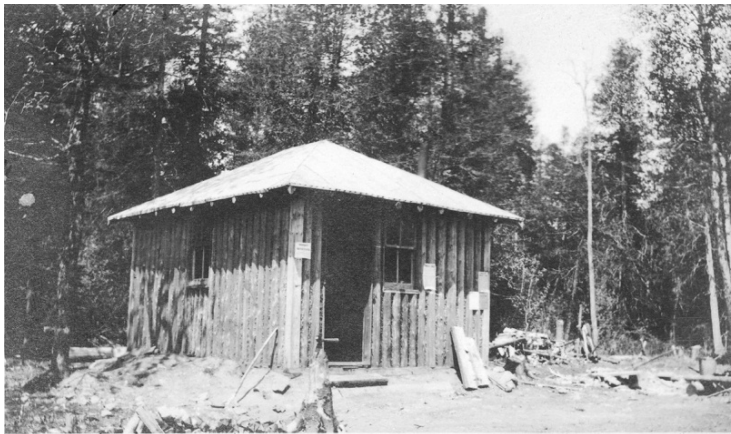


Ranger Station Built of Upright Logs in Superior National Forest



Description

Ten Mile Ranger Station built of upright logs in the Superior National Forest in Minnesota. Lyle Watts notes on the photo that he helped build it.

Date(s)

1912

Accession Number 2009-3103

2.5 x 4 inches Black & White

Related Collection [Watts, Lyle Papers](#)

Keywords Buildings Forests and forestry

Rights The Library is unaware of any copyright claims to this item; use at your own risk.

Note: If you use this image, rights assessment and attribution are your responsibility.

Harry S. Truman Library & Museum.

Attention media: Please make note of this item's accession number. Print out this page and retain it for your permissions records before downloading this image file for possible publication. Library staff cannot sign permissions forms or provide additional paperwork. The Library charges no usage fees for downloaded images.