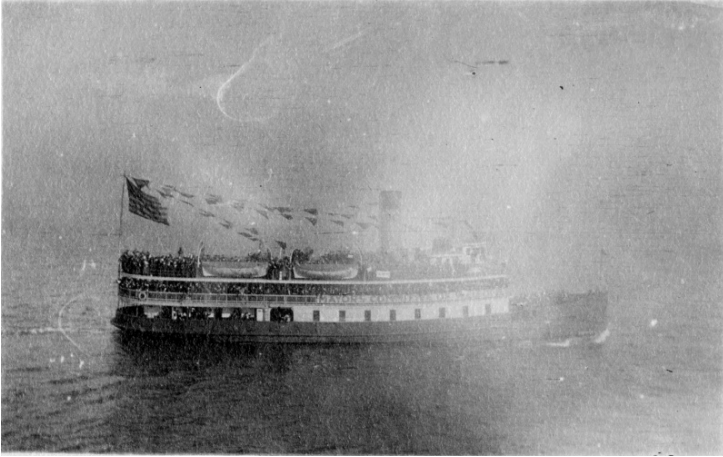


# A Ferry Boat Loaded with U.S. Servicemen in New York Harbor



## Description

This is a photograph of a ferry boat in New York harbor loaded with servicemen returning to the United States from World War I. The photograph is part of a collection belonging to Harry S. Truman from the time he spent in France during World War I.

## Date(s)

April 1919

**Accession Number** 2016-1025

2.4 x 1.6 inches    Black & White

**Related Collection** [Daniel, Margaret Truman and E. Clifton Daniel Papers](#)

**Keywords** Ships    World War, 1914-1918

**Rights** Public Domain - This item is in the public domain and can be used freely without further permission.

**Note: If you use this image, rights assessment and attribution are your responsibility.**

Harry S. Truman Library & Museum.

Attention media: Please make note of this item's accession number. Print out this page and retain it for your permissions records before downloading this image file for possible publication. Library staff cannot sign permissions forms or provide additional paperwork. The Library charges no usage fees for downloaded images.