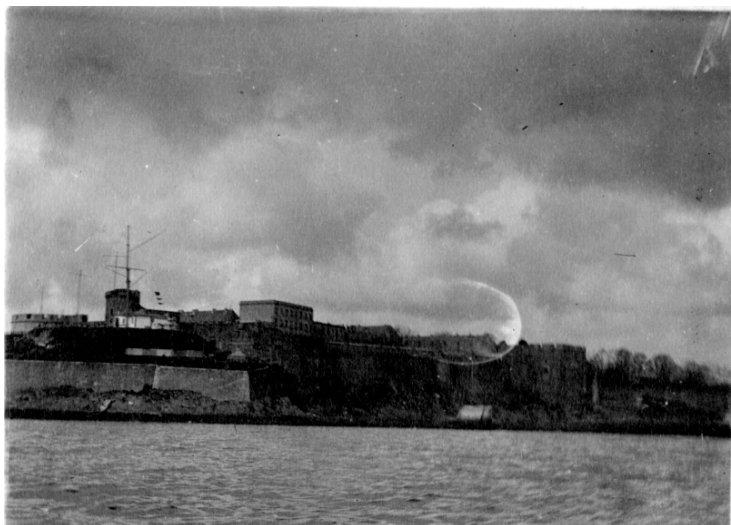


The Brest Castle in France During World War I



Description

The Chateau d'Brest, photographed from across the Penfeld River during World War I. Harry S. Truman arrived in France through the port of Brest, France. There is a circular mark in the center of the photograph. The photograph is part of a collection belonging to Harry S. Truman from the time he spent in France during World War I.

Date(s)

ca.

April 1918

Accession Number
2016-978

2.9 x 2.0 inches Black & White

Related Collection [Daniel, Margaret Truman and E. Clifton Daniel Papers](#)

Keywords Dwellings World War, 1914-1918

Rights Public Domain - This item is in the public domain and can be used freely without further permission.

Note: If you use this image, rights assessment and attribution are your responsibility.

Harry S. Truman Library & Museum.

Attention media: Please make note of this item's accession number. Print out this page and retain it for your permissions records before downloading this image file for possible publication. Library staff cannot sign permissions forms or provide additional paperwork. The Library charges no usage fees for downloaded images.