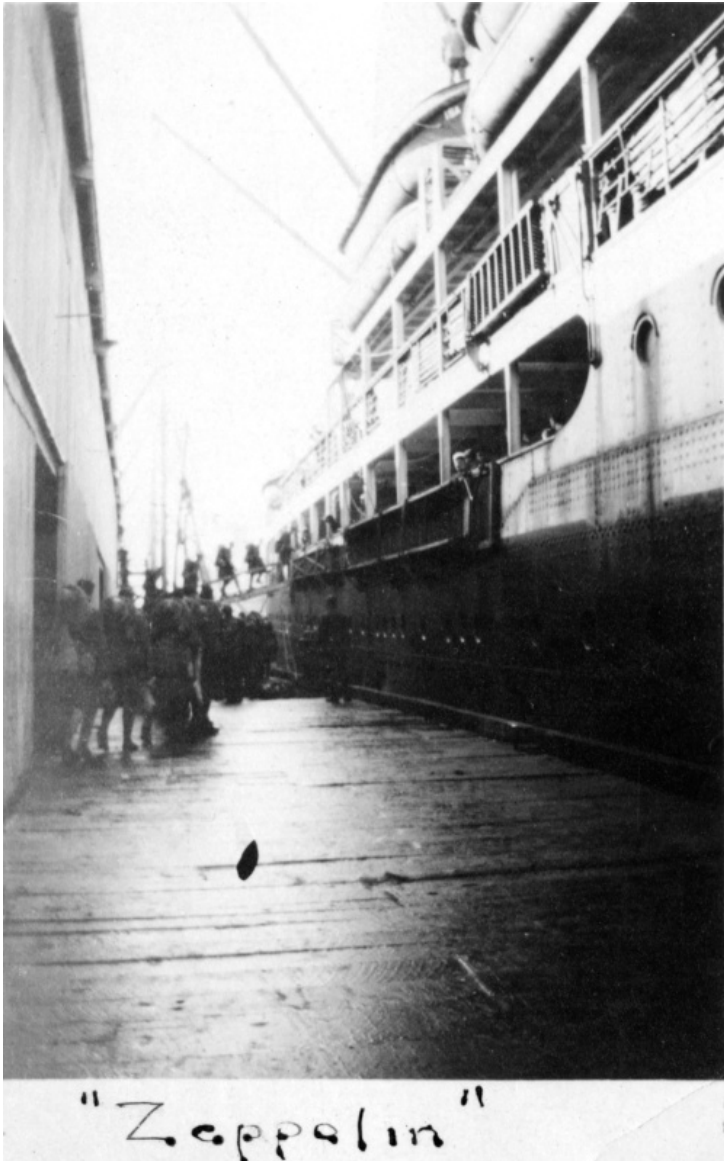


# A Photograph of the USS Zeppelin



## Description

A line of soldiers appears to be boarding a ship identified at the bottom of the photograph as the USS Zeppelin. They are returning to the United States after fighting in France in World War I.

## Date(s)

ca.  
April 1919

Accession Number 2016-948

2.1 x 3.4 inches Black & White

Related Collection [Daniel, Margaret Truman and E. Clifton Daniel Papers](#)

Keywords Ships World War, 1914-1918 Soldiers

Rights Public Domain - This item is in the public domain and can be used freely without further permission.

Note: If you use this image, rights assessment and attribution are your responsibility.

Harry S. Truman Library & Museum.

Attention media: Please make note of this item's accession number. Print out this page and retain it for your permissions records before downloading this image file for possible publication. Library staff cannot sign permissions forms or provide additional paperwork. The Library charges no usage fees for downloaded images.