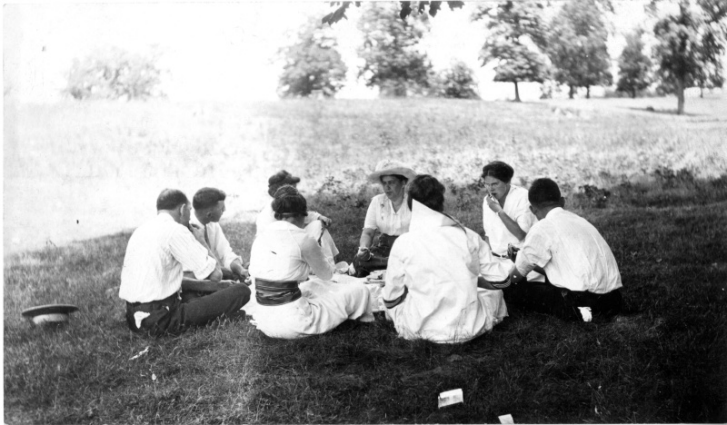


# Harry S. Truman At a Picnic With Friends



## Description

Harry S. Truman (second from the left) enjoys a picnic with a group of friends. May Southern Wallace is seated second from the right. Others are unidentified.

## Date(s)

ca.  
1913

Accession Number 2016-895

5.3 x 3.0 inches    Black & White

**Related Collection** [Daniel, Margaret Truman and E. Clifton Daniel Papers](#)

**Keywords** Picnicking

**People Pictured** Truman, Harry S., 1884-1972    Wallace, May (Mary Frances), 1894-

**Rights** Public Domain - This item is in the public domain and can be used freely without further permission.

**Note: If you use this image, rights assessment and attribution are your responsibility.**

Harry S. Truman Library & Museum.

Attention media: Please make note of this item's accession number. Print out this page and retain it for your permissions records before downloading this image file for possible publication. Library staff cannot sign permissions forms or provide additional paperwork. The Library charges no usage fees for downloaded images.