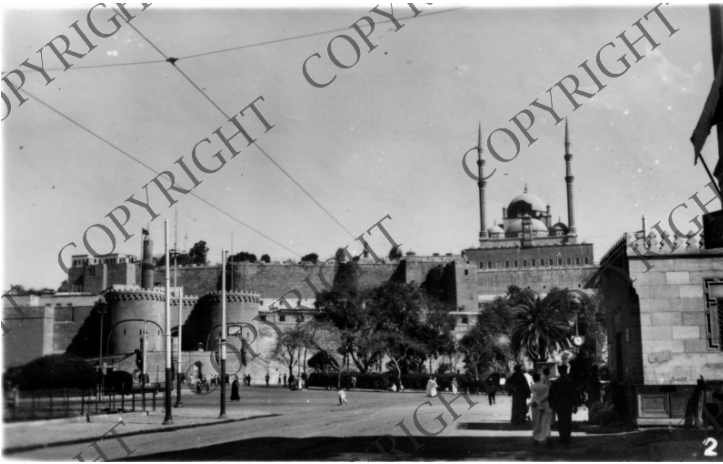


# The Saladin Citadel in Cairo, Egypt



**Accession Number** 2016-851

3.1 x 2.0 inches    Black & White

**Related Collection** [Daniel, Margaret Truman and E. Clifton Daniel Papers](#)

**Rights** Copyrighted - This item is copyrighted and cannot be published, reproduced, or otherwise used without the explicit permission of the copyright holder.

**Note: If you use this image, rights assessment and attribution are your responsibility.**

**Credit:** Palphot    Harry S. Truman Library & Museum.

Attention media: Please make note of this item's accession number. Print out this page and retain it for your permissions records before downloading this image file for possible publication. Library staff cannot sign permissions forms or provide additional paperwork. The Library charges no usage fees for downloaded images.

## **Description**

This is a commercial photograph of the Saladin Citadel in Cairo, Egypt. The Citadel is a Muslim fortification built between 1176 and 1183 C.E. to defend against the invading Crusaders. E. Clifton Daniel, Jr. wrote on the back of the photograph: "Inside these walls is the great Mohammed Aly mosque, right, and the well where Joseph stored grain for the seven lean years." Part of a group of photographs originally sent by E. Clifton Daniel, Jr. to his mother.

## **Date(s)**

ca.  
1950