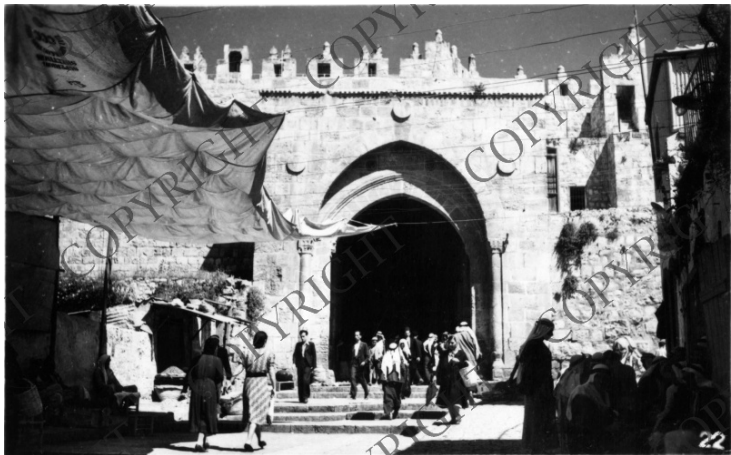


The Damascus Gate into the Old City of Jerusalem



Accession Number 2016-771

3.2 x 2.0 inches Black & White

Related Collection [Daniel, Margaret Truman and E. Clifton Daniel Papers](#)

Rights Copyrighted - This item is copyrighted and cannot be published, reproduced, or otherwise used without the explicit permission of the copyright holder.

Note: If you use this image, rights assessment and attribution are your responsibility.

Credit: Palphot Harry S. Truman Library & Museum.

Attention media: Please make note of this item's accession number. Print out this page and retain it for your permissions records before downloading this image file for possible publication. Library staff cannot sign permissions forms or provide additional paperwork. The Library charges no usage fees for downloaded images.

Description

This is a commercial photograph of the Damascus Gate, one of seven gates that provide access to the Old City of Jerusalem. The gate is so named because it faces Damascus, Syria and in ancient days the road to Damascus entered Jerusalem through this gate. Part of a group of photographs originally sent by E. Clifton Daniel, Jr. to his mother.

Date(s)

ca.
1950