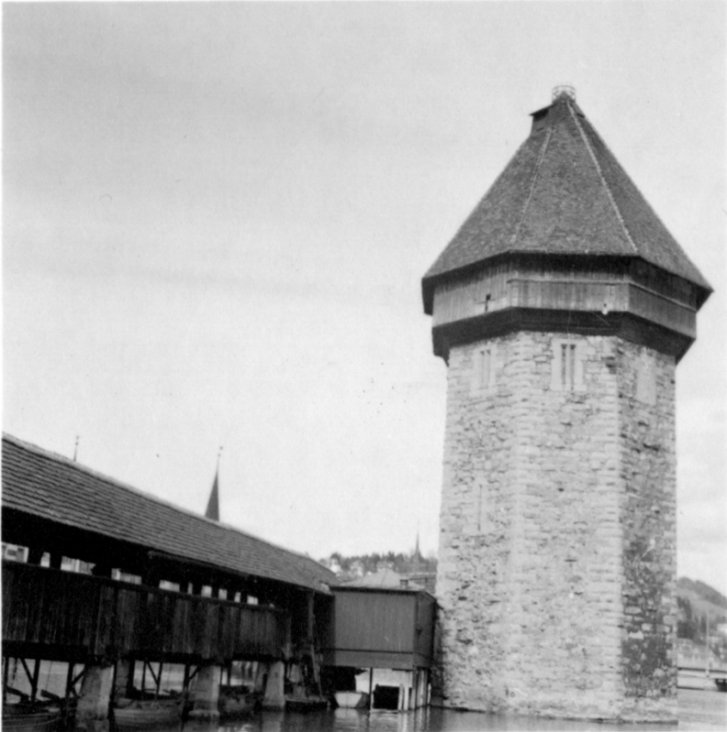


The Water Tower and the Chapel Bridge in Lucerne, Switzerland



Description

A photograph of the Water Tower and the Chapel Bridge in Lucerne, Switzerland. Probably taken while E. Clifton Daniel, Jr. traveled in Europe.

Date(s)

ca.
1941

Accession Number 2016-356

1.5 x 1.6 inches Black & White

Related Collection [Daniel, Margaret Truman and E. Clifton Daniel Papers](#)

Keywords Bridges Buildings

Rights The Library is unaware of any copyright claims to this item; use at your own risk.

Note: If you use this image, rights assessment and attribution are your responsibility.

Harry S. Truman Library & Museum.

Attention media: Please make note of this item's accession number. Print out this page and retain it for your permissions records before downloading this image file for possible publication. Library staff cannot sign permissions forms or provide additional paperwork. The Library charges no usage fees for downloaded images.