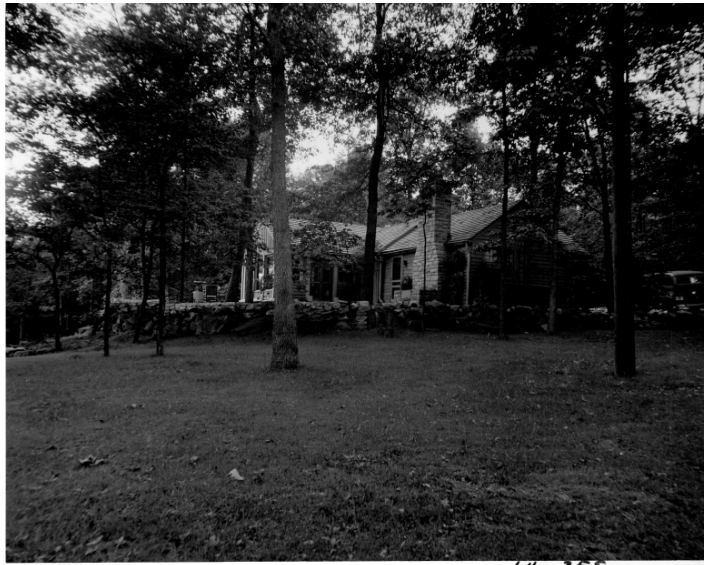


Shangri-La, Presidential Retreat



Description

This is a view of the main lodge at the Presidential retreat, Shangri-La, in Maryland.

Date(s)

September 6, 1950

Accession Number 64-355

8x10 inches (21x26 cm) Black & White

Related Collection [Rigdon, William M. Papers](#)

Keywords Presidential residences Presidential retreats

Rights The Library is unaware of any copyright claims to this item; use at your own risk.

Note: If you use this image, rights assessment and attribution are your responsibility.

Harry S. Truman Library & Museum.

Attention media: Please make note of this item's accession number. Print out this page and retain it for your permissions records before downloading this image file for possible publication. Library staff cannot sign permissions forms or provide additional paperwork. The Library charges no usage fees for downloaded images.