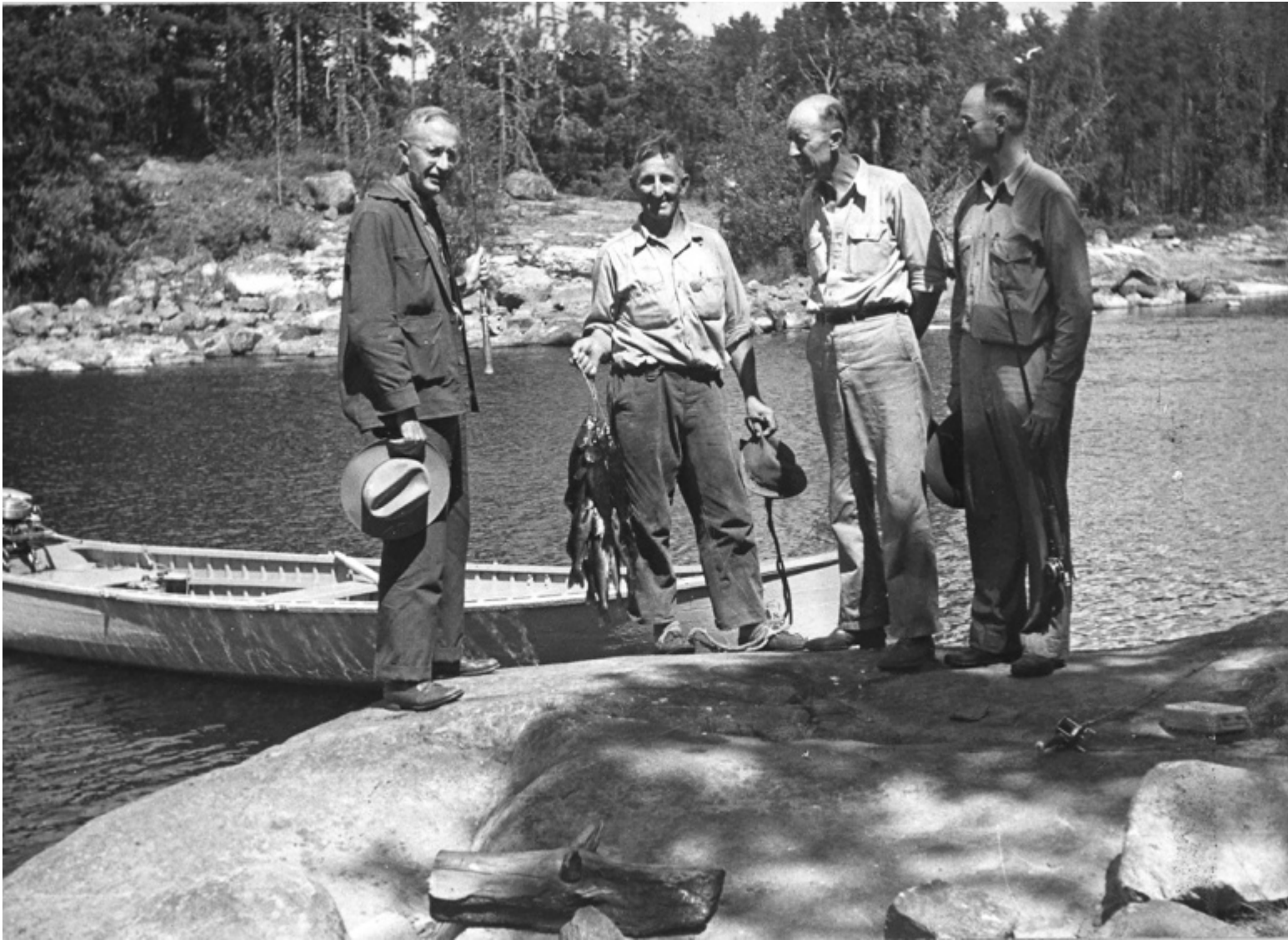


U.S. Forest Chief Lyle Watts and Other Rangers with Walleyes near Curtain Falls



Accession Number

2009-3080-94

Description

(L to R) U.S. Forest Chief Lyle Watts, Forester Salminen, Ranger Valentine, and Forester Pike with walleyes caught below Curtain Falls on the international border between Iron Lake and Crooked Lake in Superior National Forest. Photos 2009-3080-01 through 2009-3080-107 were originally mounted in a leather bound binder with the gold embossed title, "Picture Memories of Region Nine." Region nine, based in Milwaukee WI covered twenty states in the Eastern Region: Maine, Illinois, Ohio, Michigan, Wisconsin, Minnesota, Iowa, Missouri, Indiana, Pennsylvania, West Virginia, Maryland, New York, Connecticut, Rhode Island, Massachusetts, Vermont, New Hampshire, Delaware, and New Jersey. Mr. Watts was Regional Forester of Region Nine 1936-1943.

Date(s)

August 4, 1946

3 x 4 inches

Black & White

Related Collection

[Watts, Lyle Papers](#)

Keywords

Fishing

Government employees

Forests and forestry

People Pictured

Watts, Lyle F. (Lyle Ford), 1890-

Rights

Public Domain - This item is in the public domain and can be used freely without further permission.

Note: If you use this image, rights assessment and attribution are your responsibility.

Credit:

Forest Service

Harry S. Truman Library & Museum.

Attention media: Please make note of this item's accession number. Print out this page and retain it for your permissions records before downloading this image file for possible publication. Library staff cannot sign permissions forms or provide additional paperwork. The Library charges no usage fees for downloaded images.