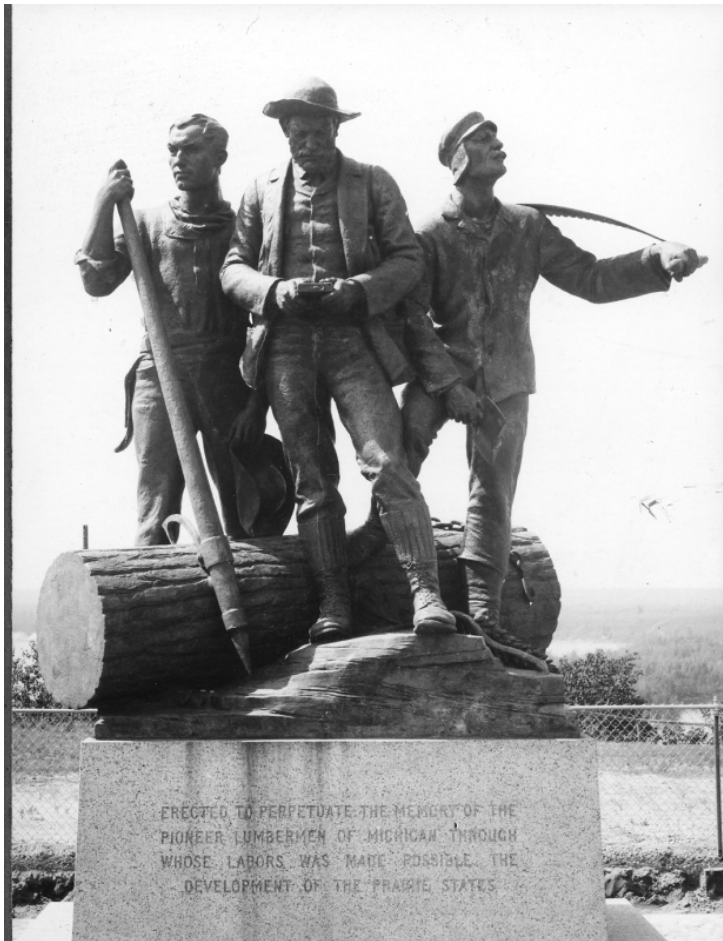


# National Forest Lumberman's Monument along Au Sable River Highway near Oscoda, Michigan



## Description

National Forest Lumberman's Monument along Au Sable River Highway near Oscoda, Michigan erected in 1931. The inscription at the base of the monument reads, "Erected to perpetuate the memory of the pioneer lumbermen of Michigan through whose labors was made possible the development of the prairie states." Photos 2009-3080-01 through 2009-3080-107 were originally mounted in a leather bound binder with the gold embossed title, "Picture Memories of Region Nine." Region Nine, based in Milwaukee, WI, covered twenty states in the Eastern Region: Maine, Illinois, Ohio, Michigan, Wisconsin, Minnesota, Iowa, Missouri, Indiana, Pennsylvania, West Virginia, Maryland, New York, Connecticut, Rhode Island, Massachusetts, Vermont, New Hampshire, Delaware, and New Jersey. Mr. Watts was Regional Forester of Region Nine 1936-1943.

Date(s)

ca.

1936

Accession Number  
2009-3080-32

4x5 inches (10x13 cm)      Black & White

Related Collection [Watts, Lyle Papers](#)

Keywords   Monuments      Forests and forestry      Lumber trade

Rights   The Library is unaware of any copyright claims to this item; use at your own risk.

**Note: If you use this image, rights assessment and attribution are your responsibility.**

Harry S. Truman Library & Museum.

Attention media: Please make note of this item's accession number. Print out this page and retain it for your permissions records before downloading this image file for possible publication. Library staff cannot sign permissions forms or provide additional paperwork. The Library charges no usage fees for downloaded images.