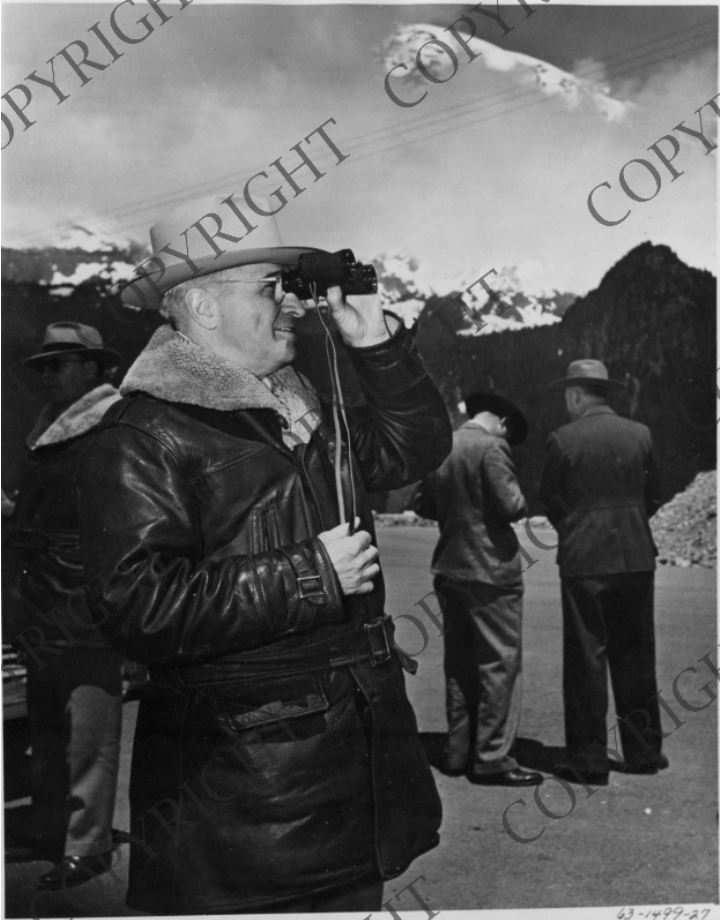


# President Harry S. Truman in Washington State



## Description

President Harry S. Truman view the scenery in the mountains of Washington State through a pair of binoculars. All other men in the background are unidentified. This photograph is from the album "Mr. President, His Family and Friends."

## Date(s)

June 1945

**Accession Number** 63-1499-27

8x10 inches (21x26 cm)      Black & White

**Keywords** Mountains      Presidential trips      Presidents

**HST Keywords** Truman - Trips - West Coast - June 1945

**People Pictured** Truman, Harry S., 1884-1972

**Rights** Copyrighted - This item is copyrighted and cannot be published, reproduced, or otherwise used without the explicit permission of the copyright holder.

**Note: If you use this image, rights assessment and attribution are your responsibility.**

**Credit:** Life Magazine      Harry S. Truman Library & Museum.

Attention media: Please make note of this item's accession number. Print out this page and retain it for your permissions records before downloading this image file for possible publication. Library staff cannot sign permissions forms or provide additional paperwork. The Library charges no usage fees for downloaded images.