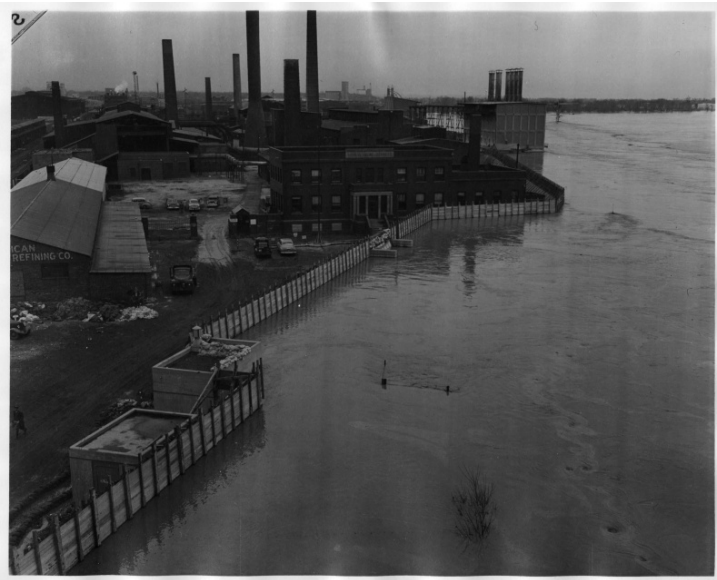


Flood Waters Near the Top of Levee



Description

Flood water from the Missouri River reaches near the top of a levee in Omaha, Nebraska. Behind the levee is the American Smelting and Refining Company building, well below the present water level.

Date(s)

April 16, 1952

Accession Number
2015-2063

8x10 inches (21x26 cm) Black & White

Keywords Floods Rivers Flood damage Refineries Industries

Rights Public Domain - This item is in the public domain and can be used freely without further permission.

Note: If you use this image, rights assessment and attribution are your responsibility.

Credit: John S. Savage Omaha World-Herald Harry S. Truman Library & Museum.

Attention media: Please make note of this item's accession number. Print out this page and retain it for your permissions records before downloading this image file for possible publication. Library staff cannot sign permissions forms or provide additional paperwork. The Library charges no usage fees for downloaded images.