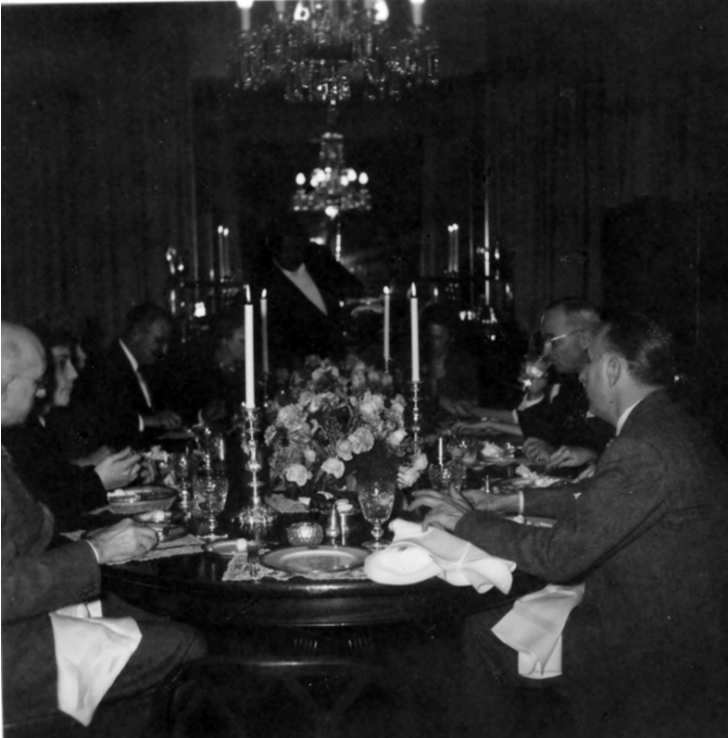


President Truman and Family at Dinner at Blair House



Description

Small snapshot of a family dinner at Blair House, probably around the time of the 1949 inauguration. Left to right around table: Frank Wallace, David Wallace, George Wallace, Natalie Wallace (partially obscured), May Wallace (partially obscured), President Harry S. Truman (drinking from glass), and Fred Wallace. A butler can be seen at the end of the table. From: Truman house.

Date(s)

ca.

January 1949

Accession Number 83-79-02

4x5 inches (10x13 cm) Black & White

Keywords Dinners and dining Presidential family Presidential residences Presidents White House staff

HST Keywords Truman - Relatives - Wallace - Wallace, Frank; Truman - Relatives - Wallace - Wallace, Mrs. Frank (Natalie); Truman - Relatives - Wallace - Wallace, Fred; Truman - Relatives - Wallace - Wallace, George; Truman - Relatives - Wallace - Wallace, Mrs. George (May); White House - Blair House

People Pictured Truman, Harry S., 1884-1972 Wallace, David Frederick, 1934- Wallace, Frank Gates, 1887-1960 Wallace, Fred, 1900-1957 Wallace, George Porterfield, 1892-1963 Wallace, May (Mary Frances), 1894- Wallace, Natalie Ott, 1891-1960

Rights Public Domain - This item is in the public domain and can be used freely without further permission.

Note: If you use this image, rights assessment and attribution are your responsibility.

Harry S. Truman Library & Museum.

Attention media: Please make note of this item's accession number. Print out this page and retain it for your permissions records before downloading this image file for possible publication. Library staff cannot sign permissions forms or provide additional paperwork. The Library charges no usage fees for downloaded images.