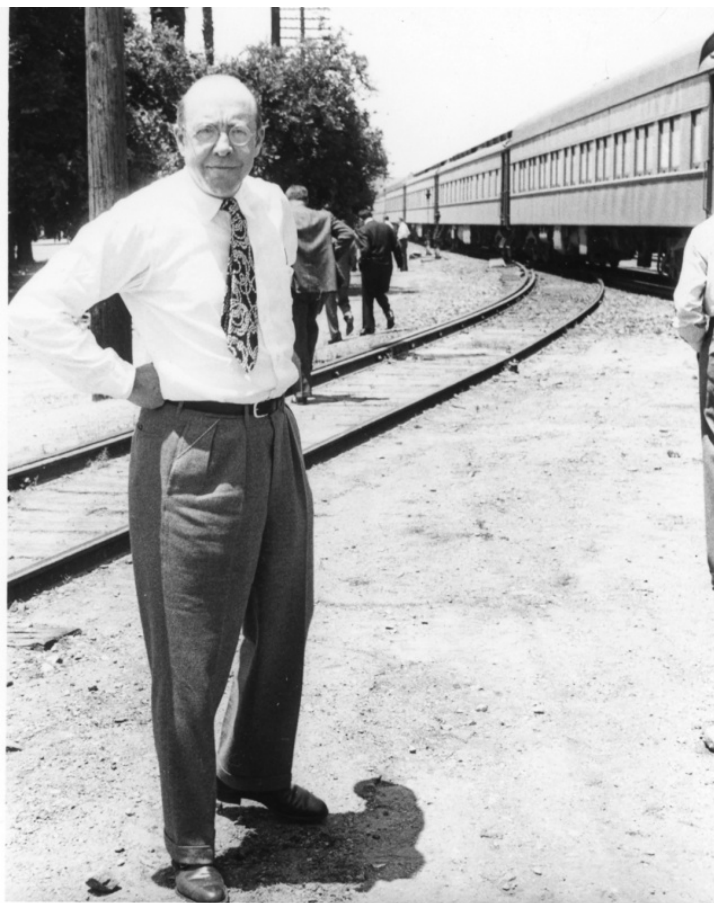


Stanton Griffis stands beside a train



Description

Stanton Griffis stands with his hands on his hips beside a train, location unknown.

Date(s)

Accession Number 2009-2274

4x5 inches (10x13 cm) Black & White

Related Collection [Griffis, Stanton Papers](#)

Keywords Ambassadors Railroad stations

People Pictured Griffis, Stanton, 1887-1974

Rights The Library is unaware of any copyright claims to this item; use at your own risk.

Note: If you use this image, rights assessment and attribution are your responsibility.

Harry S. Truman Library & Museum.

Attention media: Please make note of this item's accession number. Print out this page and retain it for your permissions records before downloading this image file for possible publication. Library staff cannot sign permissions forms or provide additional paperwork. The Library charges no usage fees for downloaded images.