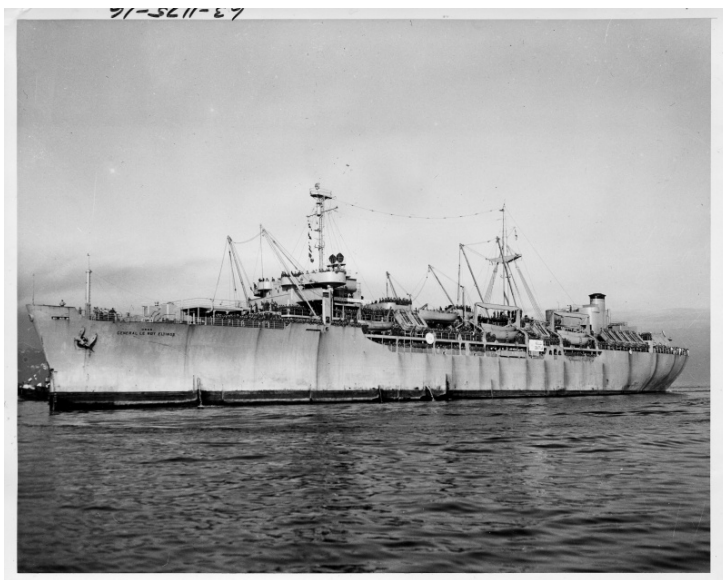


# The United States Naval Ship General LeRoy Eltinge



## Description

The United States Naval Ship General LeRoy Eltinge, carrying over 1,500 soldiers back to the United States from combat duty in Korea. They landed at the Seattle, Washington Port of Embarkation.

## Date(s)

May 5, 1951

**Accession Number** 63-1175-16

8x10 inches (21x26 cm)    Black & White

**Related Collection** [Pace, Frank, Jr. Papers](#)

**Keywords** Korean War, 1950-1953    Ships

**Rights** Public Domain - This item is in the public domain and can be used freely without further permission.

**Note: If you use this image, rights assessment and attribution are your responsibility.**

**Credit:** U.S. Army    Harry S. Truman Library & Museum.

Attention media: Please make note of this item's accession number. Print out this page and retain it for your permissions records before downloading this image file for possible publication. Library staff cannot sign permissions forms or provide additional paperwork. The Library charges no usage fees for downloaded images.