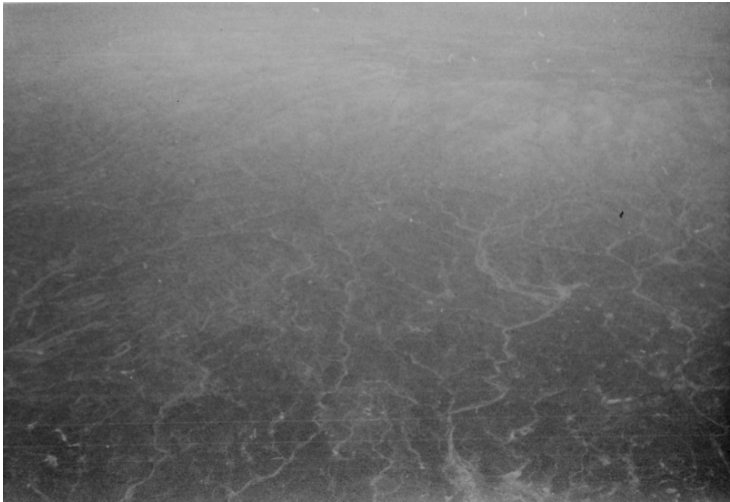


Lava Flow from Jebel Druze



Description

Aerial view of a lava flow from Jebel Druze, in Syria, taken from 30,000 feet on a flight from Karachi, Pakistan to Paris, France.

Date(s)

May 1960

Accession Number 2014-1757

5x3.5 inches Black & White

Related Collection [Gardiner, Arthur Z. Papers](#)

Keywords Aerial photographs Volcanoes

Rights The Library is unaware of any copyright claims to this item; use at your own risk.

Note: If you use this image, rights assessment and attribution are your responsibility.

Harry S. Truman Library & Museum.

Attention media: Please make note of this item's accession number. Print out this page and retain it for your permissions records before downloading this image file for possible publication. Library staff cannot sign permissions forms or provide additional paperwork. The Library charges no usage fees for downloaded images.