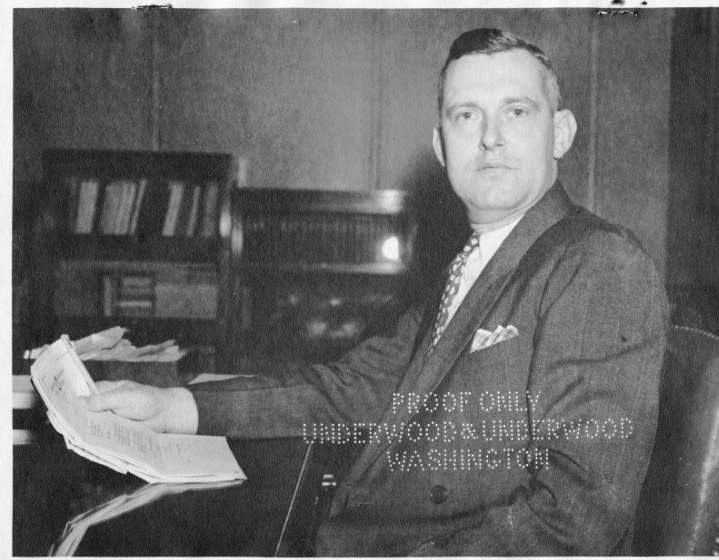


Proof of Photograph of John R. Steelman



Description

Photograph of John R. Steelman, most likely taken in his office. The photograph is a proof.

Date(s)

1937

Accession Number 2014-3816

8x10 inches (21x26 cm) Black & White

Related Collection [Steelman, John R. Papers](#)

Keywords Portraits

People Pictured Steelman, John Roy, 1900-1999

Rights Public Domain - This item is in the public domain and can be used freely without further permission.

Note: If you use this image, rights assessment and attribution are your responsibility.

Credit: Underwood & Underwood Harry S. Truman Library & Museum.

Attention media: Please make note of this item's accession number. Print out this page and retain it for your permissions records before downloading this image file for possible publication. Library staff cannot sign permissions forms or provide additional paperwork. The Library charges no usage fees for downloaded images.